

VORTAC MLU
117.2
Chan **119**

APP CRS
095°

Rwy Idg
TDZE
Apt Elev
N/A
N/A
83

VOR/DME-A
JOHN H HOOKS JR MEML (M79)

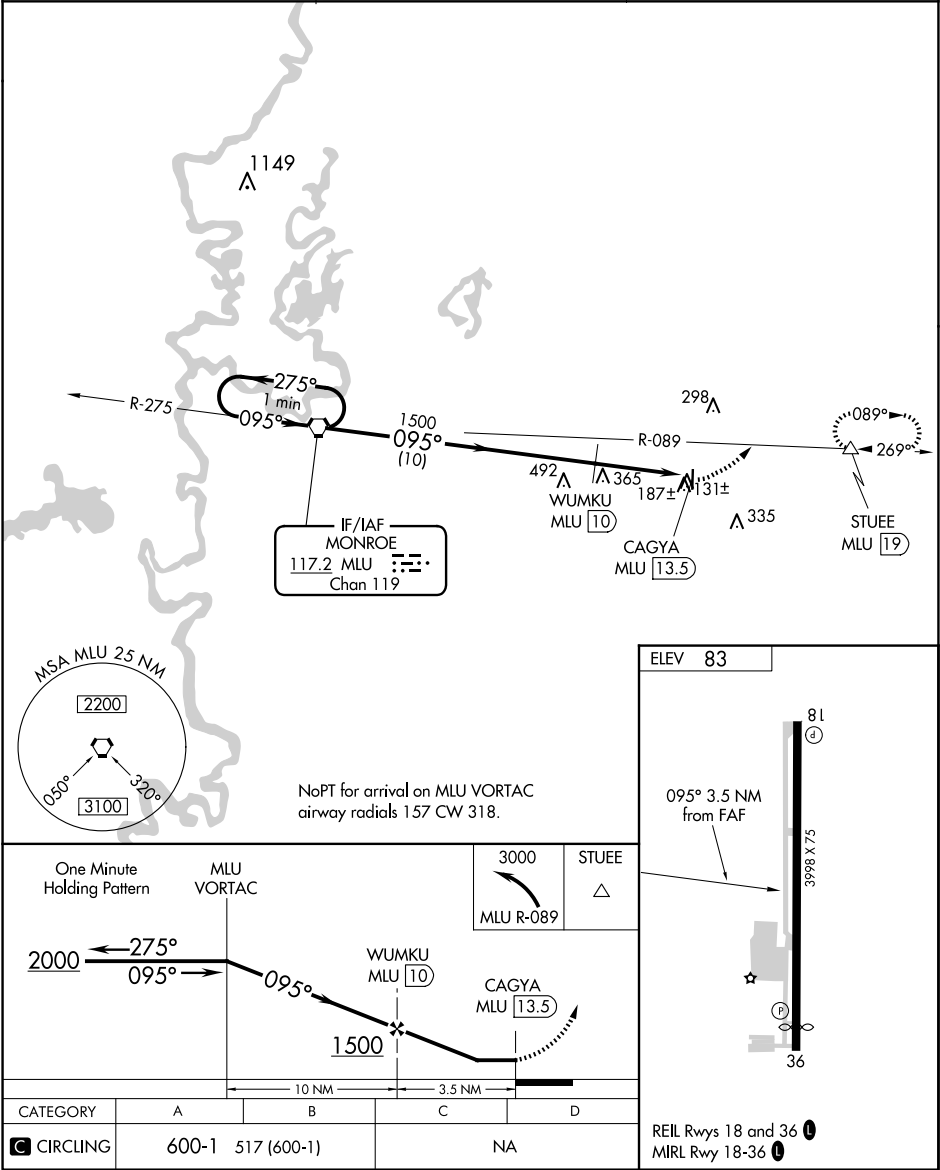
⚠

NA

Circling to Rwy 18 NA at night. Helicopter visibility reduction below 1 SM NA. Use Monroe altimeter setting; when not received use Bastrop altimeter setting and increase all MDA 20 feet.

MISSED APPROACH: Climbing left turn to 3000 on MLU VORTAC R-089 to STUEE/MLU 19 DME and hold, continue climb-in-hold to 3000.

| | | |
|---------------------------|----------------------------------|--|
| MLU ASOS 125.05 | MONROE APP CON ★ 126.9 | UNICOM 122.8 (CTAF) 0 |
|---------------------------|----------------------------------|--|



SC-4, 07 AUG 2025 to 04 SEP 2025

SC-4, 07 AUG 2025 to 04 SEP 2025