

WAAS CH 65730 W33A	APP CRS 335°	Rwy Idg TDZE Apt Elev	5201 4028 4038
--	------------------------	-----------------------------	---

RNAV (GPS) RWY 33

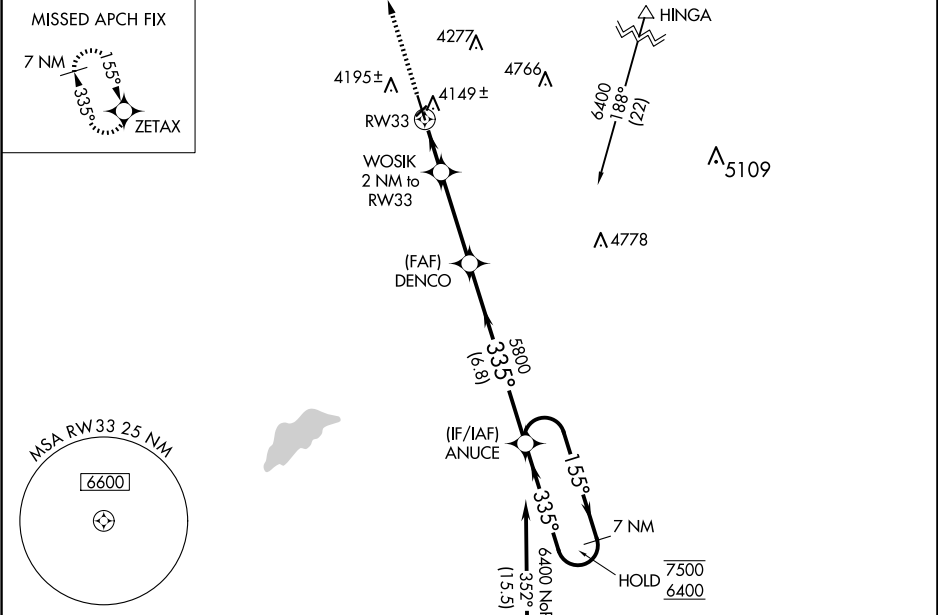
STERLING MUNI (STK)

RNP APCH.

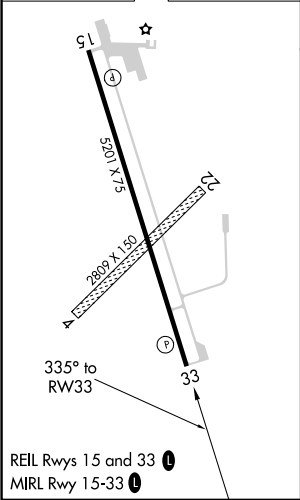
Circling NA to Rwy 4 and 22.
For uncompensated Baro-VNAV systems, LNAV/VNAV NA
below -22°C or above 54°C.

MISSED APPROACH:
Climb to 7500 direct ZETAX and hold,
continue climb-in-hold to 7500.

AWOS-3 118.525	DENVER CENTER 118.475 225.4	UNICOM 122.8 (CTAF) 0
--------------------------	---------------------------------------	---------------------------------



ELEV 4038	TDZE 4028
------------------	------------------



7500

ZETAX

*LNAV only.

WOSIK
2 NM to
RW33

1 NM to
RW33

1 NM

1 NM

3.4 NM

6.8 NM

CATEGORY	A	B	C	D
LPV DA	4278- ³ / ₄ 250 (300- ³ / ₄)			
LNAV/VNAV DA	4332-1 304 (300-1)			
LNAV MDA	4400-1 372 (400-1)			
<div>CIRCLING</div>	4520-1 482 (500-1)	4580-1 542 (600-1)	4620-1½ 582 (600-1½)	4720-2¼ 682 (700-2¼)