

WAAS CH <b>56330</b> <b>W15A</b>	APP CRS <b>155°</b>	Rwy Idg TDZE Apt Elev	<b>5201</b> <b>4038</b> <b>4038</b>
--	------------------------	-----------------------------	---

RNAV (GPS) RWY 15

STERLING MUNI (STK)

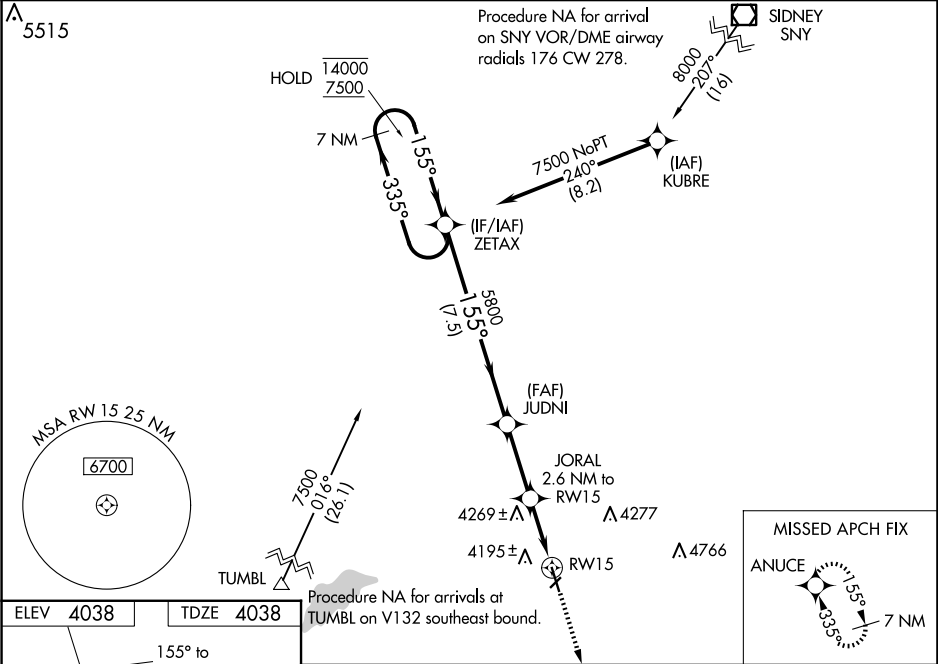
RNP APCH.

▼

Circling NA to Rwy 4 and 22. Rwy 15 helicopter visibility reduction below ¾ SM NA. For uncompensated Baro-VNAV systems, LNAV/VNAV NA below -22°C or above 54°C.

MISSED APPROACH:  
Climb to 6400 direct ANUCE and hold.

AWOS-3 <b>118.525</b>	DENVER CENTER <b>118.475 225.4</b>	UNICOM <b>122.8 (CTAF)</b> 0
--------------------------	---------------------------------------	---------------------------------



ELEV 4038 TDZE 4038

155° to RW15

501 X 75

2809 X 150

33

REIL Rwy 15 and 33 0

MIRL Rwy 15-33 0

7 NM Holding Pattern

ZETAX

JUDNI

JORAL 2.6 NM to RW15

6400 ANUCE

14000 7500

335° 155° 155°

GP 3.00° TCH 44

5800

\*4900

\*1.3 NM to RW15

RW15

\*LNAV only.

CATEGORY	A	B	C	D
LPV DA	4288-1 250 (300-1)			
LNAV/VNAV DA	4288-1 250 (300-1)			
LNAV MDA	4480-1	442 (500-1)	4480-1⅓	442 (500-1⅓)
CIRCLING	4520-1 482 (500-1)	4580-1 542 (600-1)	4620-1½ 582 (600-1½)	4720-2¼ 682 (700-2¼)

SW-1, 07 AUG 2025 to 04 SEP 2025

SW-1, 07 AUG 2025 to 04 SEP 2025