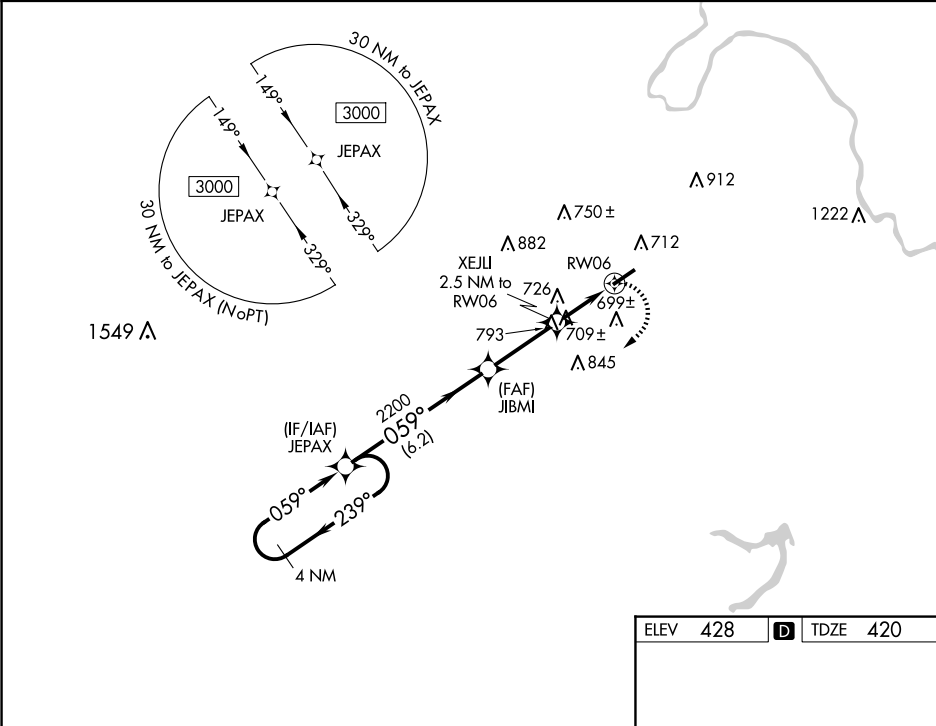


WAAS CH 56527 W06A	APP CRS 059°	Rwy Idg 4999 TDZE 420 Apt Elev 428
--	------------------------	---

RNAV (GPS) RWY 6
MUHLENBERG COUNTY (M21)

RNP APCH - GPS.	When local altimeter setting not received, use Owensboro altimeter setting and increase all MDAs 80 feet and LP visibility Cat C/D ¼, LNAV visibility Cat B/C/D ¼, and Circling visibility Cat B/C/D ¼. Rwy 6, helicopter visibility reduction below ¾ SM NA. Circling Rwy 24 NA at night.	MISSED APPROACH: Climbing right turn to 3000 direct JEPAX and hold.
-----------------	--	--

AWOS-3 120.45	CAMPBELL APP CON ★ 118.1 269.525	UNICOM 123.0 (CTAF) 0
-------------------------	--	---------------------------------



4 NM Holding Pattern	JEPAX	VGSI and descent angles not coincident (VGSI Angle 4.00/TCH 40).	3000	JEPAX
3000	239°	059°	059°	JIBMI
3000	239°	059°	059°	XEJLI
3000	239°	059°	059°	2.5 NM to RW06
3000	239°	059°	059°	3.00° TCH 40
3000	239°	059°	059°	2200
3000	239°	059°	059°	1240
3000	239°	059°	059°	RW06
3000	239°	059°	059°	6.2 NM
3000	239°	059°	059°	3 NM
3000	239°	059°	059°	2.5 NM
CATEGORY	A	B	C	D
LP MDA	960-1	540 (600-1)	960-1½	540 (600-1½)
LNAV MDA	1100-1	680 (700-1)	1100-1⅞	680 (700-1⅞)
CIRCLING	1100-1	672 (700-1)	1180-2¼	1200-2½
			752 (800-2¼)	772 (800-2½)

