

WAAS  
CH **61313**  
**W29A**

APP CRS  
**292°**

Rwy Idg **5350**  
TDZE **137**  
Apt Elev **142**

RNAV (GPS) RWY 29

ST MARY'S COUNTY RGNL (2W6)

RNP APCH - GPS.

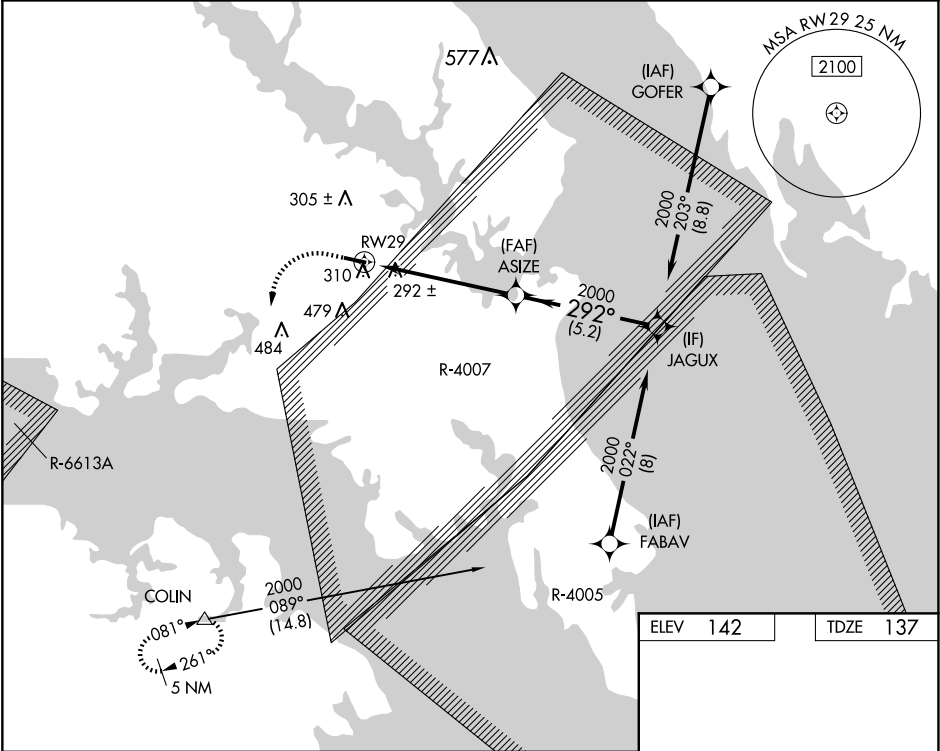
▼

NA

Rwy 29 helicopter visibility reduction below ¾ SM NA. For uncompensated Baro-VNAV systems, LNAV/VNAV NA below -15°C or above 54°C. When local altimeter setting not received, use Patuxent River altimeter setting: increase LPV DA to 475 feet and all visibilities ½ SM, increase LNAV/VNAV DA to 688 feet and all visibilities ¼ SM. Increase all MDAs 40 feet and LNAV visibility Cats C/D ½ SM.

MISSED APPROACH:  
Climb to 700 then climbing left turn to 5000 direct COLIN and hold, continue climb in hold to 5000.

AWOS-3 <b>119.575</b>	PATUXENT APP CON ★ <b>121.0 250.3</b>	UNICOM <b>123.0 (CTAF) 0</b>
--------------------------	--	---------------------------------



700

5000

COLIN

ASIZE

JAGUX

1.5 NM to RW29

2000

292°

2000

GP 3.10° TCH 40

1.5 NM

4.1 NM

5.2 NM

CATEGORY	A	B	C	D
LPV DA	441-7/8	304 (300-7/8)		
LNAV/VNAV DA	654-1 3/8	517 (600-1 3/8)		
LNAV MDA	620-1 483 (500-1)	620-1 3/8 483 (500-1 3/8)		
CIRCLING	660-1 518 (600-1)	840-2 698 (700-2)	840-2 1/4 698 (700-2 1/4)	

REIL Rwy 11 and 29 0

MIRL Rwy 11-29 0