

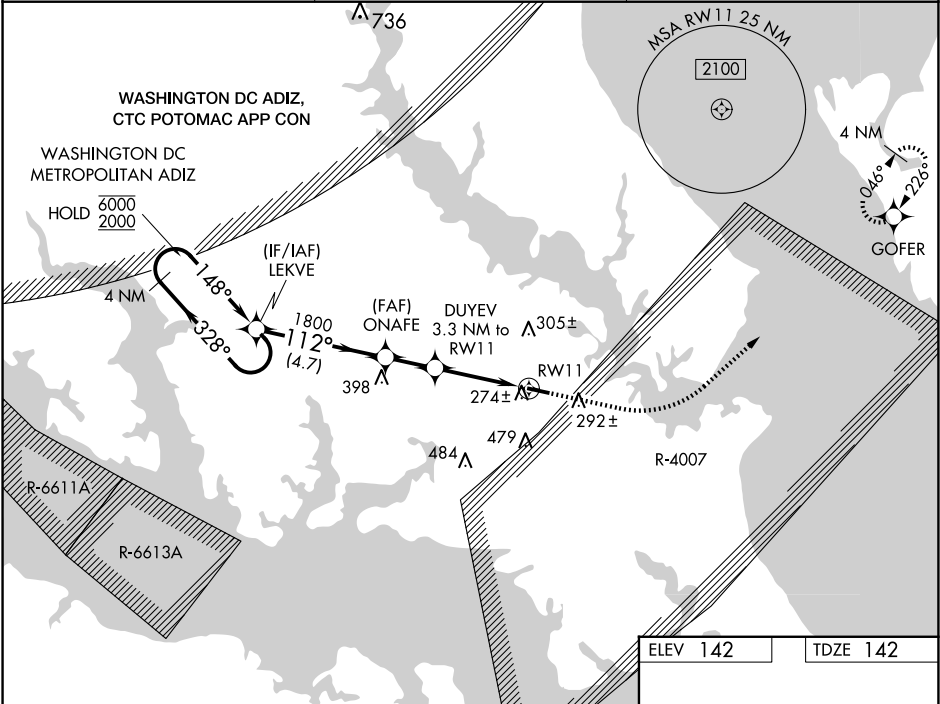
WAAS CH 70502 W11A	APP CRS 112°	Rwy Idg TDZE 142 Apt Elev 142	5350
--	------------------------	---	-------------

RNAV (GPS) RWY 11

ST MARY'S COUNTY RGNL (2W6)

RNP APCH - GPS.	<div><div>▼</div><div>Circling Rwy 29 NA at night. Rwy 11 helicopter visibility reduction below ¾ SM NA.</div></div> <div><div>▲</div><div>NA</div><div>For uncompensated Baro-VNAV systems, LNAV/VNAV NA below -15°C or above 54°C.</div></div>	MISSED APPROACH: Climb to 620 then climbing left turn to 2000 direct GOFER and hold.
-----------------	--	--

AWOS-3 119.575	PATUXENT APP CON ★ 121.0 250.3	UNICOM 123.0 (CTAF) 0
--------------------------	--	---------------------------------



4 NM Holding Pattern		LEKVE		ONAFE		DUYEV		1.1 NM to RW11		RW11		GOFER	
6000 ← 328°		2000 ← 148°		1800		1220		1800		112°		5350 X 75	
GP 3.00°		TCH 42		4.7 NM		1.8 NM		2.1 NM		1.1 NM		0.3% UP	
CATEGORY	A	B	C	D									
LPV DA	419-1				277 (300-1)								
LNAV/VNAV DA	503-1				361 (400-1)								
LNAV MDA	540-1		398 (400-1)		540-1½		398 (400-1½)						
CIRCLING	660-1		518 (600-1)		840-2		840-2¼						
						840-2		698 (700-2)					
REIL Rwy 11 and 29 0 MIRL Rwy 11-29 0													