

WAAS CH 60935 W18A	APP CRS 177°	Rwy Idg TDZE 415 Apt Elev 415	3998
--	------------------------	---	-------------

RNAV (GPS) RWY 18

FOX STEPHENS FLD/GILMER MUNI (JXI)

RNP APCH - GPS.

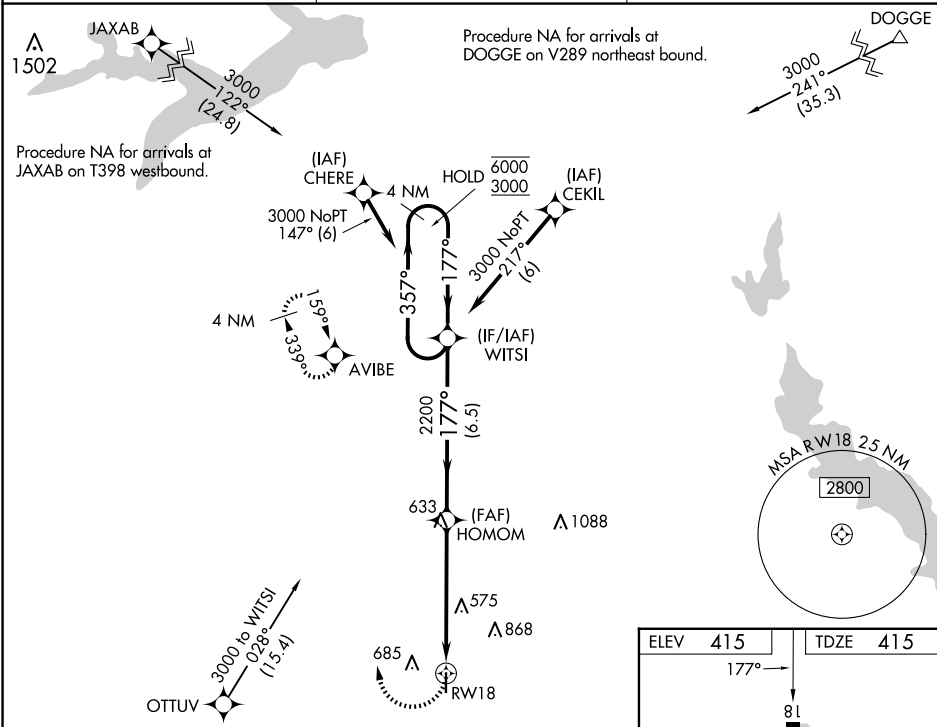
▼

Procedure NA at night. Rwy 18 helicopter visibility reduction below 1 SM NA. When local altimeter setting not received, use Longview altimeter setting and increase all MDA 60 feet and increase LP, LNAV, and Circling Cat C visibility ¼ SM.

MISSED APPROACH:

Climbing right turn to 3000 direct AVIBE and hold.

AWOS-3PT 120.250	LONGVIEW APP CON ★ 124.275 257.975	CTAF 122.9
----------------------------	--	----------------------



3000

AVIBE

VGSI and descent angles not coincident
(VGSI Angle 3.75/TCH 32).

WITSI

4 NM Holding Pattern

HOMOM

2200

RWY 18

≤ 3.00° TCH 40

CATEGORY	A	B	C	D
LP MDA	820-1	405 (500-1)	820-1½ 405 (500-1½)	NA
LNAV MDA	880-1	465 (500-1)	880-1¾ 465 (500-1¾)	NA
CIRCLING	1000-1 585 (600-1)	1060-1 645 (700-1)	1180-2¼ 765 (800-2¼)	NA

ELEV 415

TDZE 415

177°

81

3998 X 60

36

MIRL Rwy 18-36