

RNAV (GPS) RWY 6

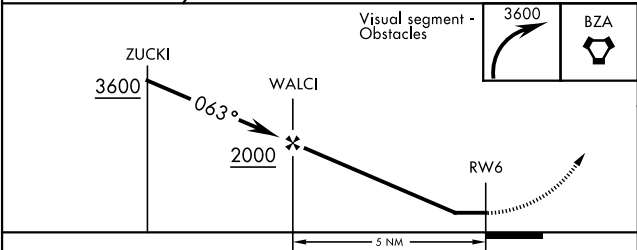
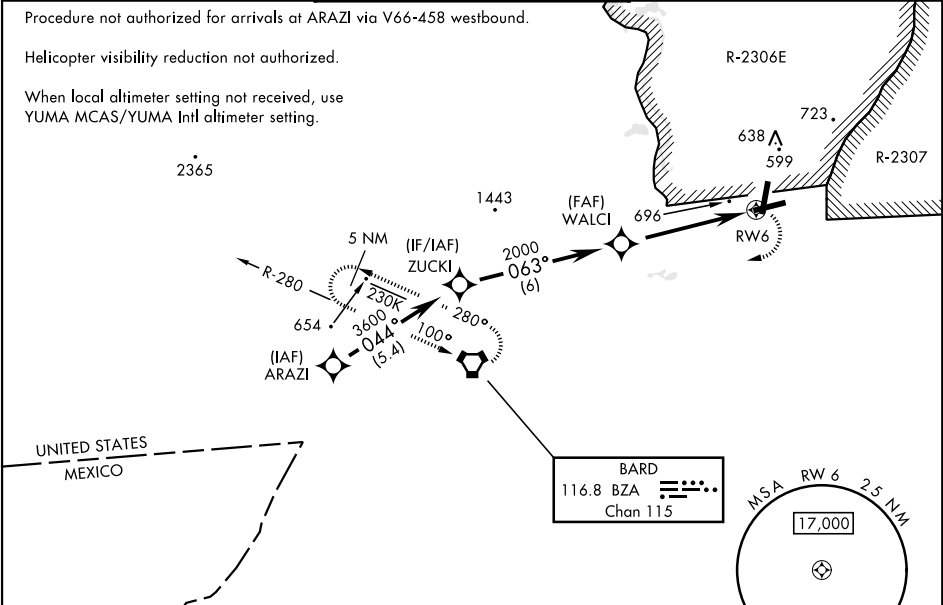
APCH CRS	Rwy Idg
063°	6043
TDZE	387
Arprt Elev	433

[USA]

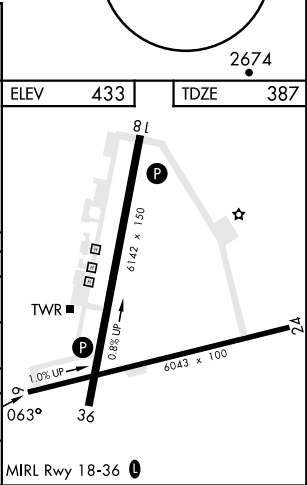
LAGUNA AAF (YUMA PROVING GROUND) (KLGF)

RNP APCH - GPS		MISSED APPROACH: Climbing right turn to 3600 direct BZA VORTAC and hold.
RADAR required for holding.		
<div>▼</div>	<div>Procedure not authorized when airfield closed. * Straight-in Minimums not authorized at night. ** Circling not authorized NW of Rwy 6 and 18. Circling to Rwy 24 not authorized at night.</div>	
<div>▲ NA</div>		

YUMA APP CON 124.7 371.975	TOWER ★ 126.2 (CTAF) 242.175	GND CON 121.8 229.4
-------------------------------	---------------------------------	------------------------



CATEGORY	A	B	C	D
LNAV MDA*	1020-1 633 (600-1)	1020-1¾ 633 (600-1¾)		
CIRCLING**	1080-1 647 (700-1)	1080-1¾ 647 (700-1¾)	1080-2 647 (700-2)	
YUMA MCAS/YUMA Intl ALTIMETER SETTING				
LNAV MDA*	1100-1 713 (700-1)	1100-2 713 (700-2)		
CIRCLING**	1160-1 727 (800-1)	1160-2 727 (800-2)	1160-2¼ 727 (800-2¼)	



RNAV (GPS) RWY 6

SW-4, 07 AUG 2025 to 04 SEP 2025

SW-4, 07 AUG 2025 to 04 SEP 2025