

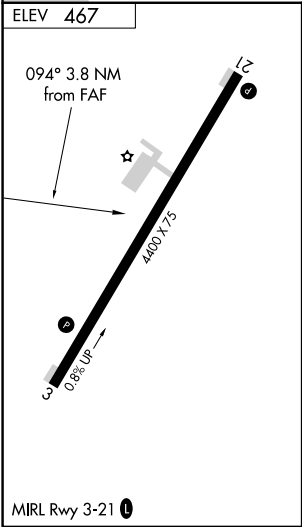
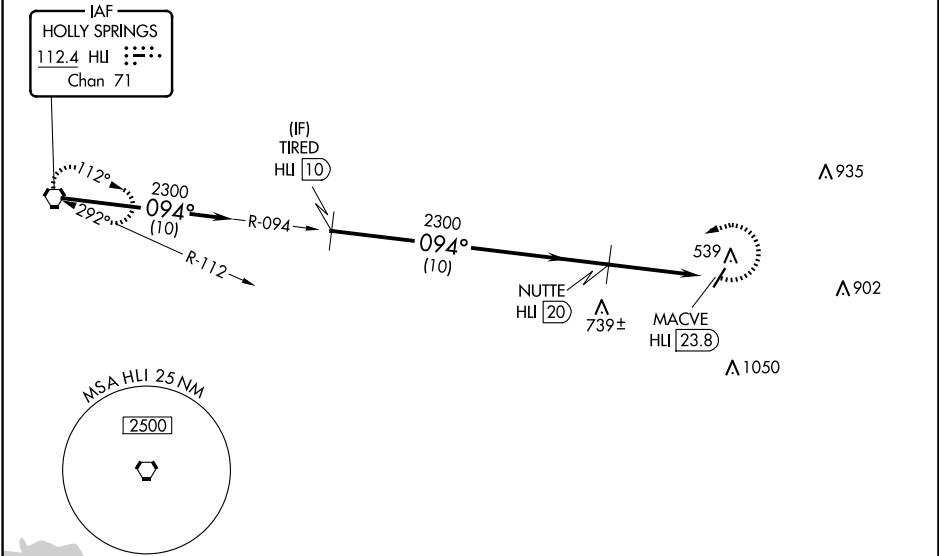
VORTAC HLI 112.4 Chan 71	APP CRS 094°	Rwy Idg TDZE Apt Elev 467	N/A N/A 467
--	------------------------	---	--------------------------

VOR/DME-A
RIPLEY (25M)

<p>▼ Use Corinth altimeter setting; when not received, use Tupelo altimeter setting and increase all MDAs 40 feet, and visibility Cat C ¼ SM. ▲ NA Procedure NA at night. Helicopter visibility reduction below 1 SM NA.</p>	MISSED APPROACH: Climbing left turn to 3000 via heading 251° and HLI VORTAC R-094 to HLI VORTAC and hold.
--	---

CRX AWOS-3PT 118.675	MEMPHIS CENTER 135.9 260.6	UNICOM 122.8 (CTAF) 0
--------------------------------	--------------------------------------	---------------------------------

Procedure NA for arrivals on HLI VORTAC
airway radials 045 CW 112.



	HLI VORTAC	TIRED HLI 10	NUTTE HLI 20	MACVE HLI 23.8
	2300	2300	2300	
	10 NM	10 NM	3.8 NM	
CATEGORY	A	B	C	D
CIRCLING	1060-1 593 (600-1)	1100-1¼ 633 (700-1¼)	1120-1¾ 653 (700-1¾)	1420-3 953 (1000-3)