

APP CRS	Rwy Idg	4400
213°	TDZE	467
	Apt Elev	467

RNAV (GPS) RWY 21
RIPLEY (25M)

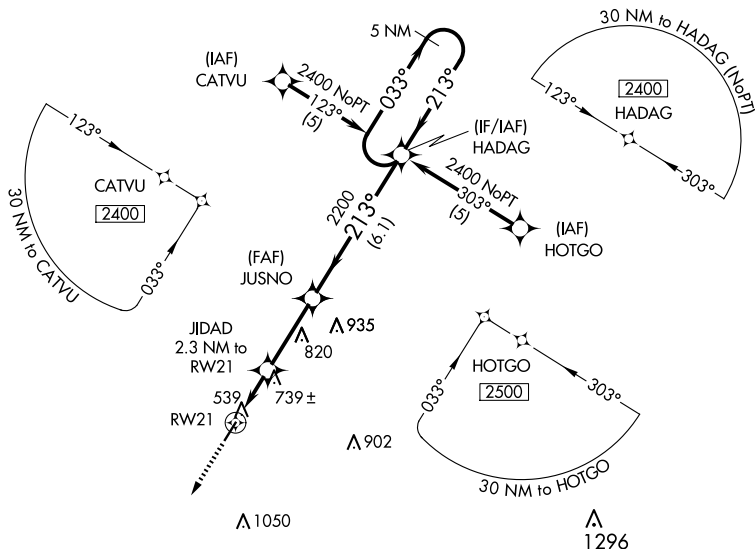
RNP APCH.

T Use Corinth altimeter setting; when not received, use Tupo altimeter setting
A NA and increase all MDA 40 feet, and increase LNAV Cat C visibility $\frac{1}{4}$ mile.
 Procedure NA at night. Rwy 21 helicopter visibility reduction below 1 SM NA.

MISSED APPROACH: Climb to 2500
direct CEDAS and hold.

CRX AWOS-3PT
118.675

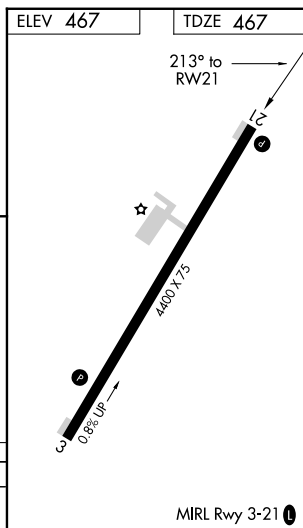
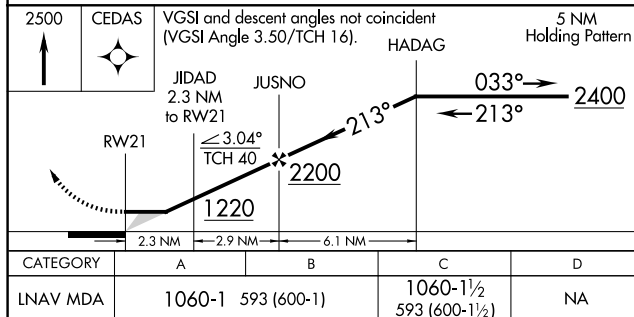
MEMPHIS CENTER
135.9 260.6

UNICOM
122.8 (CTAF) **L**

CEDAS



5 NM



RNAV (GPS) RWY 21