

WAAS CH 61341 W07A	APP CRS 074°	Rwy Ldg TDZE 6193 Apt Elev 6198
--	------------------------	---

RNAV (GPS) RWY 7

CRAIG-MOFFAT (CAG)

RNP APCH.

⚠

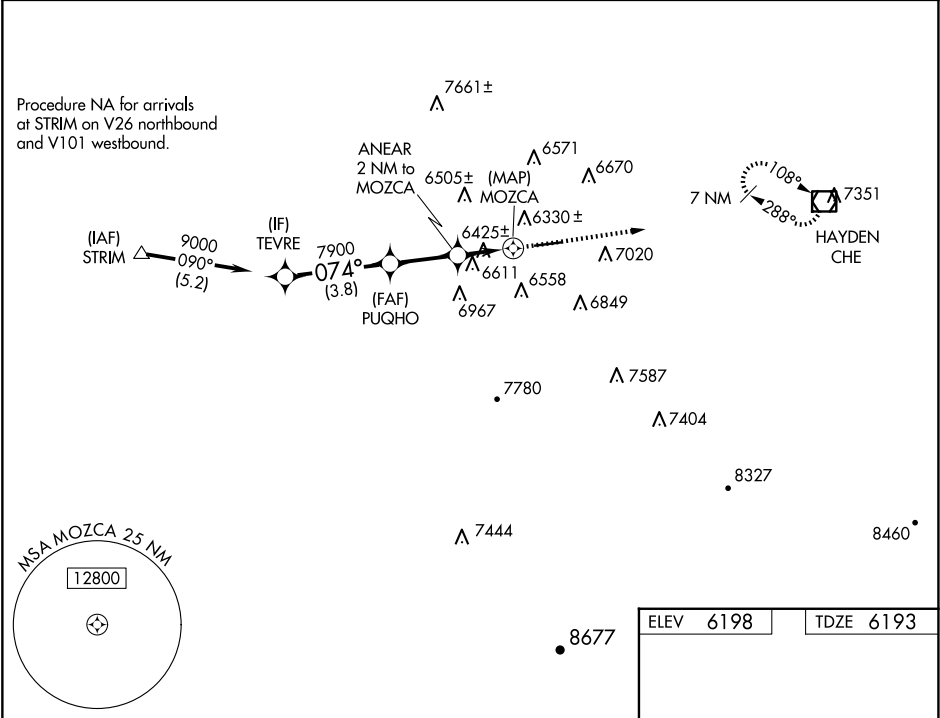
⚠

🌡️

Circling NA for Cat D south of Rwy 7-25.
Rwy 7 helicopter visibility reduction below ¾ SM NA.
Circling Rwy 25 NA at night.

MISSED APPROACH: Climb to 10000 direct
CHE VOR/DME and hold, continue climb-
in-hold to 10000.

ASOS 135.425	DENVER CENTER 120.475 235.975	UNICOM 122.8 (CTAF) 📻
------------------------	---	---------------------------------



TEVRE		PUQHO		ANEAR 2 NM to MOZCA		1 NM to MOZCA		MOZCA		10000		CHE	
9000		7900		7100		3.00° TCH 40							
3.8 NM		2.5 NM		1 NM		1		0.8					
CATEGORY	A	B		C		D							
LP MDA	6800-1	607 (700-1)		6800-1¾		607 (700-1¾)							
LNNAV MDA	6880-1	687 (700-1)		6880-2		687 (700-2)							
CIRCLING	7180-1¼ 982 (1000-1¼)	7320-1½ 1122 (1200-1½)		7720-3		1522 (1600-3)							

ELEV 6198

TDZE 6193

5606 X 100

25

074°

REIL Rwys 7 and 25 📻
MIRL Rwy 7-25 📻