

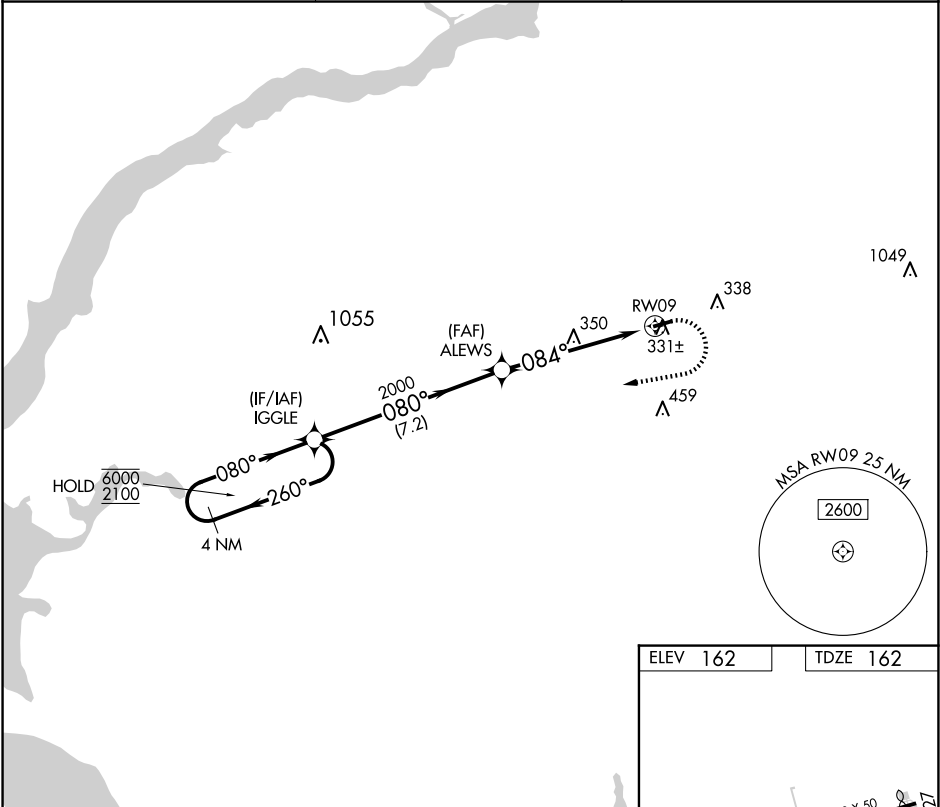
APP CRS	Rwy Idg	3500
084°	TDZE	162
	Apt Elev	162

RNAV (GPS) RWY 9

CROSS KEYS (17N)

RNP APCH - GPS.	Procedure NA at night. Rwy 9 helicopter visibility reduction below 1 SM NA. Use Philadelphia Intl altimeter setting.	MISSED APPROACH: Climbing right turn to 2100 direct IGGLE and hold.
-----------------	---	---

PHL ASOS 133.4	PHILADELPHIA APP CON 127.35 133.875 317.55	UNICOM 122.8 (CTAF) 0
-------------------	---	--------------------------



4 NM Holding Pattern		IGGLE		2100	IGGLE
6000 ← 260°		2100 → 080°		Visual Segment - Obstacles.	
		080°		RWY09	
		2000		084°	
		7.2 NM		5.7 NM	
CATEGORY	A	B	C	D	
LNAV MDA	760-1	598 (600-1)	NA		
CIRCLING	760-1 598 (600-1)	820-1 658 (700-1)	NA		
LIRL Rwy 9-27 0					