

WAAS CH 56626 W34A	APP CRS 339°	Rwy Idg 5002 TDZE 2994 Apt Elev 2999
--	------------------------	---

RNAV (GPS) RWY 34
LAMESA MUNI (LUV)

RNP APCH.

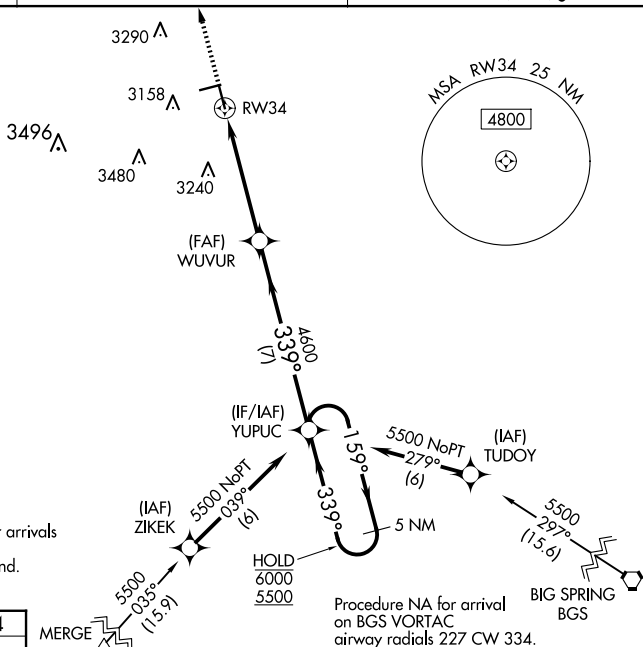
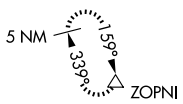


Circling Rwy 7, 25 NA at night. For uncompensated Baro-VNAV systems, LNAV/VNAV NA below -20°C or above 54°C.

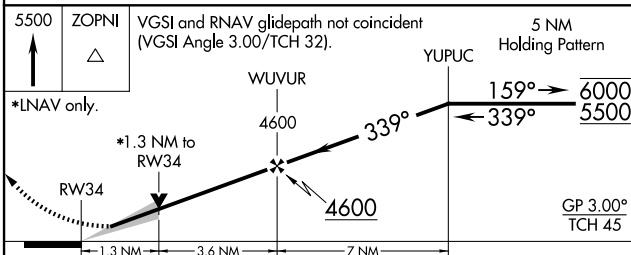
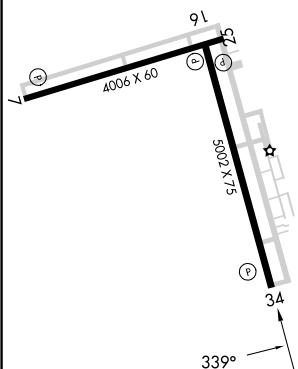
MISSED APPROACH: Climb to 5500 direct ZOPNI and hold.


AWOS-3PT 124.175	FORT WORTH CENTER 132.6 269.05	UNICOM 122.8 (CTAF) 0
----------------------------	--	---------------------------------

MISSED APCH FIX



ELEV 2999		TDZE 2994
-----------	--	-----------



CATEGORY		A	B	C	D
LPV	DA	3194- ³ / ₄ 200 (200- ³ / ₄)			
LNAV/ VNAV	DA	3244- ³ / ₄ 250 (300- ³ / ₄)			
LNAV	MDA	3420-1 426 (500-1)	3420-1 ¹ / ₄ 426 (500-1 ¹ / ₄)		
 CIRCLING		3460-1 461 (500-1)	3700-2 701 (800-2)	3840-2 ³ / ₄ 841 (900-2 ³ / ₄)	

LAMESA, TEXAS
Amdt 2 19JUL18

32°45'N-101°55'W

LAMESA MUNI (LUV)
RNAV (GPS) RWY 34

SC-2, 07 AUG 2025 to 04 SEP 2025