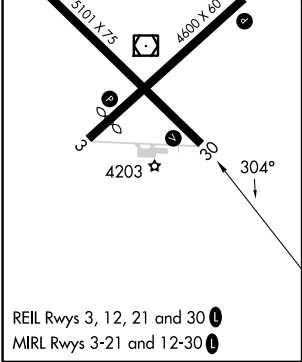
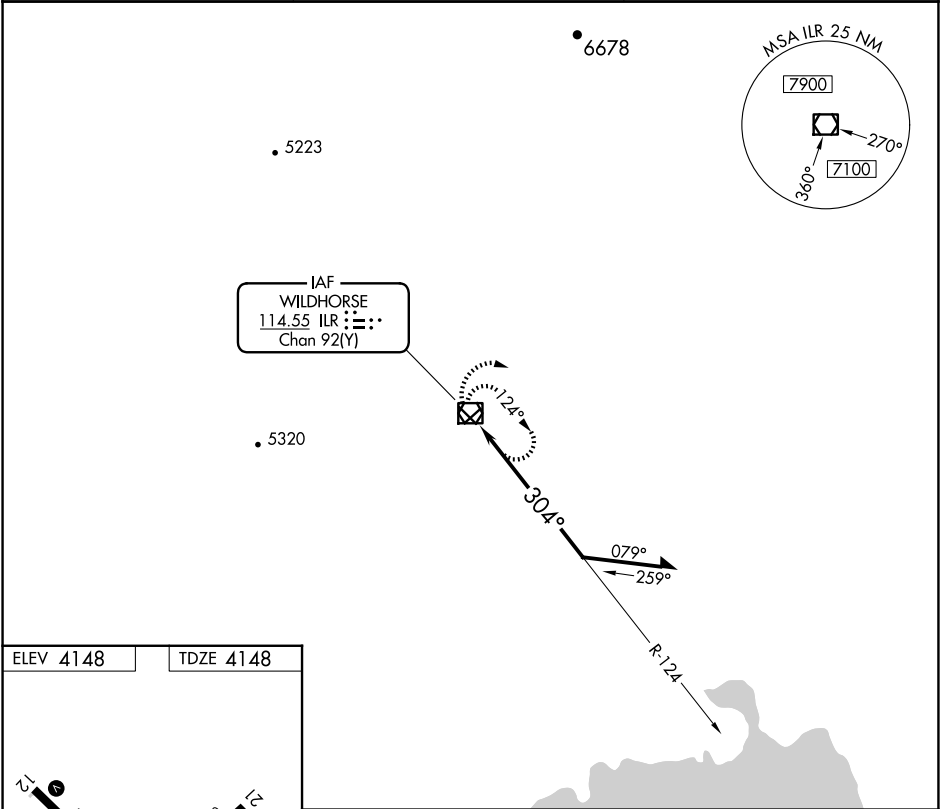


VOR/DME ILR 114.55 Chan 92 (Y)	APP CRS 304°	Rwy Idg TDZE Apt Elev	5101 4148 4148
----------------------------------------------------	------------------------	-----------------------------	-------------------------------------------

VOR RWY 30
BURNS MUNI (BNO)

MISSED APPROACH: Climbing right turn to 8000 in ILR VOR/DME holding pattern.

ASOS 135.575	SALT LAKE CENTER 128.05 306.95	UNICOM 122.8 (CTAF)
------------------------	------------------------------------------	-------------------------------



8000	ILR	ILR VOR/DME				Remain within 10 NM	
		ILR 4.5		124°		7000	
		0.4		4.1 NM			
CATEGORY	A	B	C	D			
S-30	5500-1¼ 1352 (1400-1¼)	5500-1½ 1352 (1400-1½)	5500-3	1352 (1400-3)			
CIRCLING	5500-1¼ 1352 (1400-1¼)	5500-1½ 1352 (1400-1½)	5500-3	1352 (1400-3)			

NW-1, 07 AUG 2025 to 04 SEP 2025

NW-1, 07 AUG 2025 to 04 SEP 2025