

VORTAC GSO

116.2

Chan 109

APP CRS

018°

Rwy Ldg TDZE

N/A

N/A

Apt Elev

694

VOR-A

ROCKINGHAM COUNTY NC SHILOH (SIF')

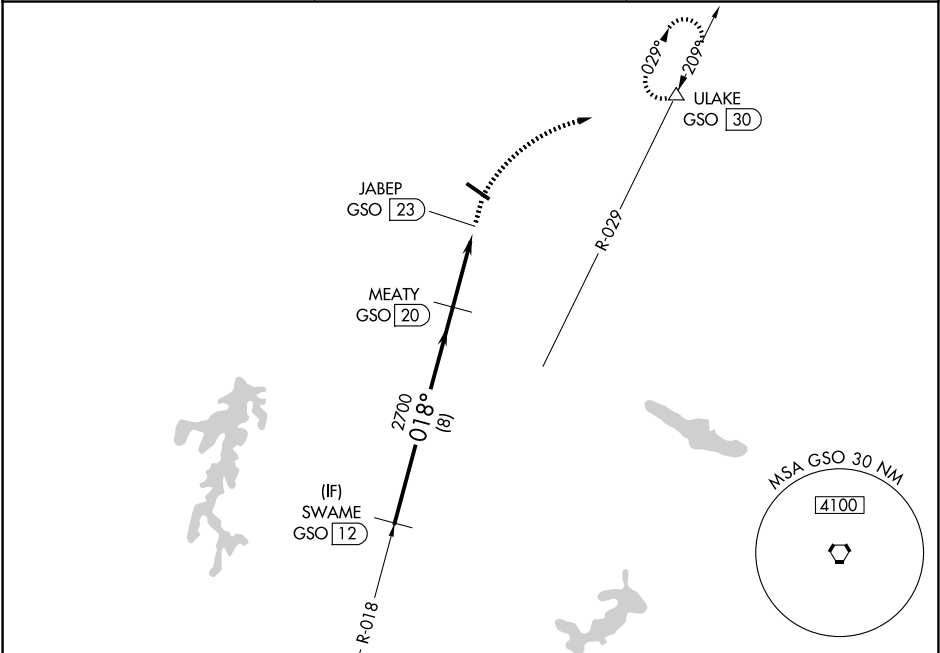
DME required.

▼

▲

MISSED APPROACH: Climb to 1300 then climbing right turn to 3100 on heading 077° and GSO VORTAC R-029 to ULAKE/GSO 30 DME and hold, continue cimb-in-hold to 3100.

AWOS-3 119.775	GREENSBORO APP CON 124.35 269.225	UNICOM 122.8 (CTAF) 0
-------------------	--------------------------------------	--------------------------



Procedure NA for arrival on GSO  
VORTAC airway radials 337 CW 054.

IAF

GREENSBORO

116.2 GSO

Chan 109

<div><div><div>SWAME GSO 12</div><div>3100</div></div><div><div>MEATY GSO 20</div><div>2700</div></div><div><div>JABEP GSO 23</div></div></div> <div><div>1300 ↑</div><div>3100 hdg R-029 077°</div><div>GSO R-029</div><div>ULAKE △</div></div> <div><div>018°</div><div>8 NM</div><div>3 NM</div></div>					<div><div>018°</div><div>0.5% Up</div></div>						
CATEGORY	A		B	C	D	FAF to MAP 3 NM					
CIRCLING	1280-1½ 586 (600-1½)		1340-1½ 646 (700-1½)	1340-1¾ 646 (700-1¾)	1440-2½ 746 (800-2½)	Knots	60	90	120	150	180
						Min:Sec	3:00	2:00	1:30	1:12	1:00