

APP CRS
072°

Rwy Ldg
TDZE
Apt Elev

4000
643
643

RNAV (GPS) RWY 7

MASON COUNTY (3I2)

RNP APCH - GPS.

▼

▲

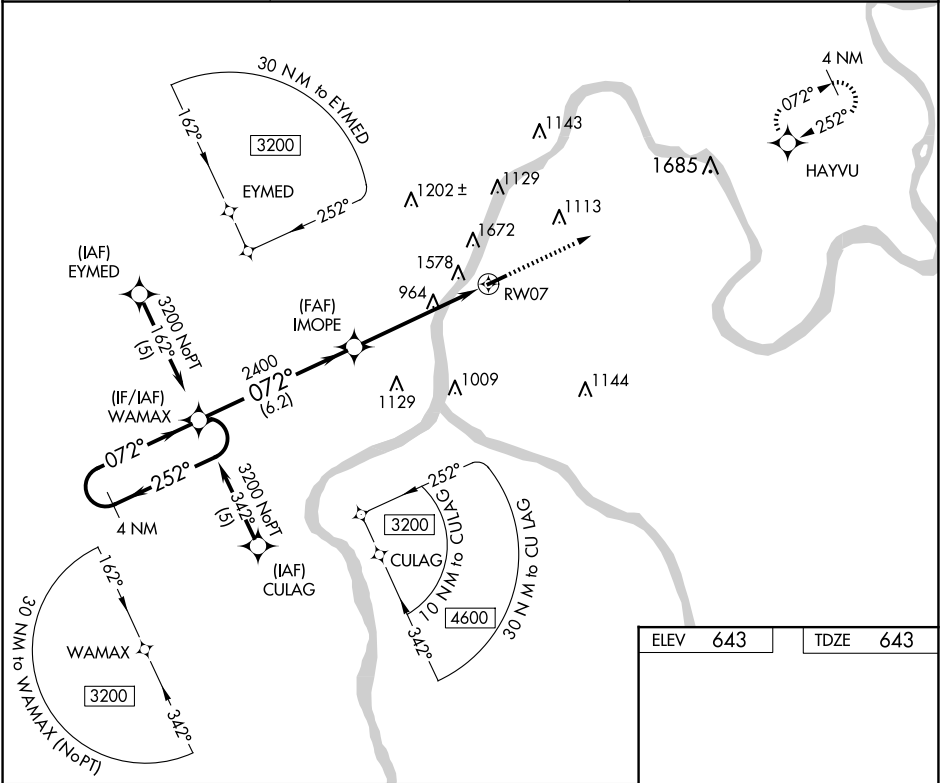
SS

-17°C

Circling NA NW of Rwy 7-25. Rwy 7 helicopter visibility reduction below ¾ SM NA. When local altimeter setting not received, use Athens/Albany, OH altimeter setting and increase all MDA 80 feet. Straight-in and Circling NA at night to Rwy 7.

MISSED APPROACH:
Climb to 2700 direct HAYVU and hold.

AWOS-3 119.675	HUNTINGTON APP CON 128.4 270.1	UNICOM 122.8 (CTAF) 0
-------------------	-----------------------------------	--------------------------



4 NM Holding Pattern

WAMAX

3200

252°

072°

072°

IMOPE

2400

3.04°

TCH 40

6.2 NM

5.3 NM

RW07

2700

HAYVU

0.3% UP

4000 X 75

VGSI and descent angles not coincident (VGSI Angle 3.00/TCH 44).

2700

HAYVU

CATEGORY	A	B	C	D
LNVA MDA	1880-1¼ 1237 (1300-1¼)	1880-1½ 1237 (1300-1½)	1880-3	1237 (1300-3)
CIRCLING	1880-1¼ 1237 (1300-1¼)	1880-1½ 1237 (1300-1½)	1880-3	1237 (1300-3)

REIL Rws 7 and 25 0
MIRL Rwy 7-25 0