

| | | |
|-------------|----------|-------------|
| APP CRS | Rwy Idg | 3084 |
| 347° | TDZE | 574 |
| | Apt Elev | 574 |

RNAV (GPS) RWY 35

RALPH M HALL/ROCKWALL MUNI (F46)

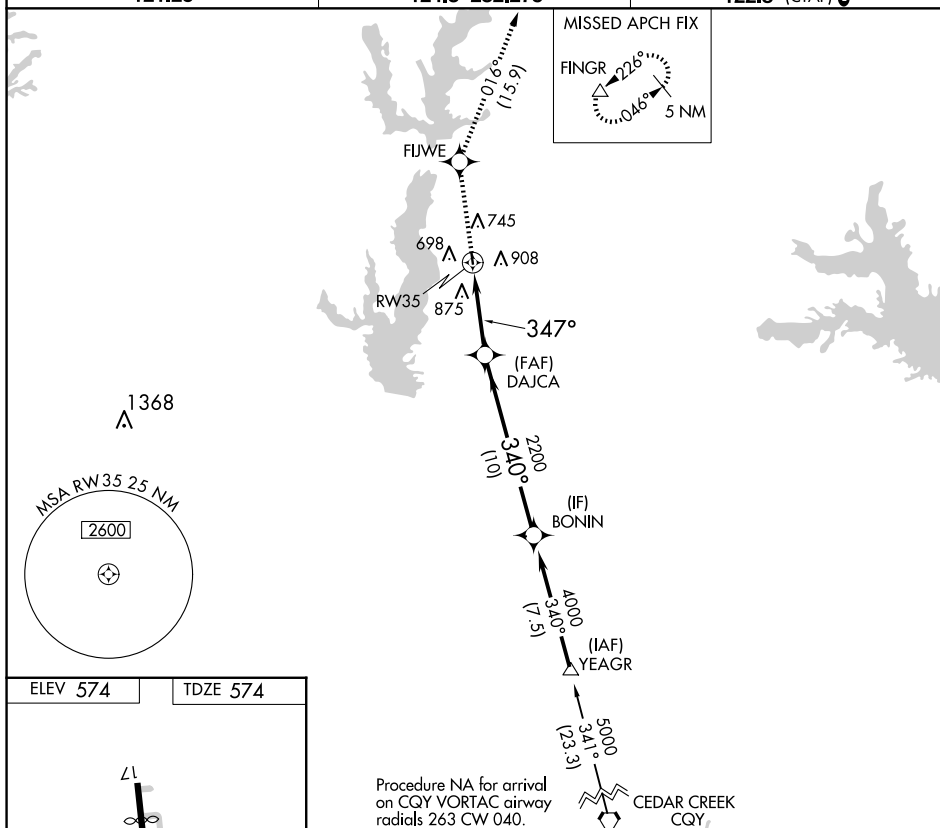

T DME/DME RNP-0.3 NA. When local altimeter setting not received, use Dallas Love Fld altimeter setting and increase all MDA 80 feet.

A Helicopter visibility reduction below 1 SM NA. Procedure NA at night.

MISSED APPROACH: Climb to 5000 direct FIJWE and on track 016° to FINGR and hold.

AWOS-3PT
121.25

LONE STAR APP CON
124.3 282.275

UNICOM
122.8 (CTAF) 

ELEV 574

TDZE 574

Procedure NA for arrival
on CQY VORTAC airway
radials 263 CW 040.

| | | | |
|---|---|------------|---|
| 5000 | FIJWE | tr 016° | FINGR |
|  |  | |  |

BONIN

4000

DAJCA

1

| | 1980 | 1985 | 1990 | 1995 | 2000 | 2005 | 2010 | 2015 | 2020 |
|--|-------|-------|-------|-------|-------|-------|-------|-------|-------|
| Population | 76.5 | 80.5 | 84.5 | 88.5 | 92.5 | 96.5 | 100.0 | 103.5 | 107.0 |
| GDP per capita | 1,000 | 1,200 | 1,400 | 1,600 | 1,800 | 2,000 | 2,200 | 2,400 | 2,600 |
| Life expectancy at birth | 65 | 68 | 71 | 74 | 77 | 80 | 83 | 86 | 89 |
| Urban population (%) | 35 | 40 | 45 | 50 | 55 | 60 | 65 | 70 | 75 |
| Employment rate (%) | 55 | 58 | 61 | 64 | 67 | 70 | 73 | 76 | 79 |
| Unemployment rate (%) | 15 | 12 | 10 | 8 | 7 | 6 | 5 | 4 | 3 |
| Government expenditure as % of GDP | 15 | 18 | 21 | 24 | 27 | 30 | 33 | 36 | 39 |
| Private consumption as % of GDP | 55 | 58 | 61 | 64 | 67 | 70 | 73 | 76 | 79 |
| Investment as % of GDP | 10 | 12 | 14 | 16 | 18 | 20 | 22 | 24 | 26 |
| Exports as % of GDP | 10 | 12 | 14 | 16 | 18 | 20 | 22 | 24 | 26 |
| Imports as % of GDP | 10 | 12 | 14 | 16 | 18 | 20 | 22 | 24 | 26 |
| Current account balance as % of GDP | -5 | -4 | -3 | -2 | -1 | 0 | 1 | 2 | 3 |
| Foreign direct investment as % of GDP | 2 | 3 | 4 | 5 | 6 | 7 | 8 | 9 | 10 |
| Official development assistance as % of GDP | 1 | 1 | 1 | 1 | 1 | 1 | 1 | 1 | 1 |
| Net international reserves as % of GDP | 5 | 6 | 7 | 8 | 9 | 10 | 11 | 12 | 13 |
| Public debt as % of GDP | 20 | 25 | 30 | 35 | 40 | 45 | 50 | 55 | 60 |
| Private debt as % of GDP | 10 | 12 | 14 | 16 | 18 | 20 | 22 | 24 | 26 |
| Total debt as % of GDP | 30 | 37 | 44 | 51 | 58 | 65 | 72 | 79 | 86 |
| Government revenue as % of GDP | 15 | 18 | 21 | 24 | 27 | 30 | 33 | 36 | 39 |
| Government expenditure as % of GDP | 15 | 18 | 21 | 24 | 27 | 30 | 33 | 36 | 39 |
| Primary deficit as % of GDP | 0 | 0 | 0 | 0 | 0 | 0 | 0 | 0 | 0 |
| Interest payments as % of GDP | 1 | 1 | 1 | 1 | 1 | 1 | 1 | 1 | 1 |
| Capital expenditures as % of GDP | 5 | 6 | 7 | 8 | 9 | 10 | 11 | 12 | 13 |
| Operating expenditures as % of GDP | 10 | 12 | 14 | 16 | 18 | 20 | 22 | 24 | 26 |
| Transfer payments as % of GDP | 5 | 6 | 7 | 8 | 9 | 10 | 11 | 12 | 13 |
| Social security contributions as % of GDP | 5 | 6 | 7 | 8 | 9 | 10 | 11 | 12 | 13 |
| Healthcare expenditure as % of GDP | 3 | 4 | 5 | 6 | 7 | 8 | 9 | 10 | 11 |
| Educational expenditure as % of GDP | 2 | 3 | 4 | 5 | 6 | 7 | 8 | 9 | 10 |
| Infrastructure expenditure as % of GDP | 2 | 3 | 4 | 5 | 6 | 7 | 8 | 9 | 10 |
| Research and development expenditure as % of GDP | 1 | 1 | 1 | 1 | 1 | 1 | 1 | 1 | 1 |
| Environmental protection expenditure as % of GDP | 0.5 | 0.5 | 0.5 | 0.5 | 0.5 | 0.5 | 0.5 | 0.5 | 0.5 |
| Disaster relief expenditure as % of GDP | 0.5 | 0.5 | 0.5 | 0.5 | 0.5 | 0.5 | 0.5 | 0.5 | 0.5 |
| Military expenditure as % of GDP | 1 | 1 | 1 | 1 | 1 | 1 | 1 | 1 | 1 |
| Other government expenditure as % of GDP | 1 | 1 | 1 | 1 | 1 | 1 | 1 | 1 | 1 |
| Non-current transfers as % of GDP | 1 | 1 | 1 | 1 | 1 | 1 | 1 | 1 | 1 |
| Current transfers as % of GDP | 4 | 5 | 6 | 7 | 8 | 9 | 10 | 11 | 12 |
| Grants as % of GDP | 1 | 1 | 1 | 1 | 1 | 1 | 1 | 1 | 1 |
| Tax revenue as % of GDP | 10 | 12 | 14 | 16 | 18 | 20 | 22 | 24 | 26 |
| Income tax revenue as % of GDP | 5 | 6 | 7 | 8 | 9 | 10 | 11 | 12 | 13 |
| Corporate tax revenue as % of GDP | 3 | 4 | 5 | 6 | 7 | 8 | 9 | 10 | 11 |
| Excise duty revenue as % of GDP | 2 | 3 | 4 | 5 | 6 | 7 | 8 | 9 | 10 |
| Social security contributions as % of GDP | 5 | 6 | 7 | 8 | 9 | 10 | 11 | 12 | 13 |
| Other taxes as % of GDP | 1 | 1 | 1 | 1 | 1 | 1 | 1 | 1 | 1 |
| Subsidies as % of GDP | 1 | 1 | 1 | 1 | 1 | 1 | 1 | 1 | 1 |
| Other non-tax revenue as % of GDP | 1 | 1 | 1 | 1 | 1 | 1 | 1 | 1 | 1 |
| Debt service as % of GDP | 1 | 1 | 1 | 1 | 1 | 1 | 1 | 1 | 1 |
| Interest payments as % of GDP | 1 | 1 | 1 | 1 | 1 | 1 | 1 | 1 | 1 |
| Principal repayments as % of GDP | 0 | 0 | 0 | 0 | 0 | 0 | 0 | 0 | 0 |
| Grants as % of GDP | 1 | 1 | 1 | 1 | 1 | 1 | 1 | 1 | 1 |
| Other income as % of GDP | 0 | 0 | 0 | 0 | 0 | 0 | 0 | 0 | 0 |
| Other expenditure as % of GDP | 1 | 1 | 1 | 1 | 1 | 1 | 1 | 1 | 1 |
| Other income as % of GDP | 0 | 0 | 0 | 0 | 0 | 0 | 0 | 0 | 0 |
| Other expenditure as % of GDP | 1</ | | | | | | | | |

RW35

2

[illegible]

B

| CATEGORY |
|----------|
|----------|

INAY MDA

CIRCLING

| | |
|---|---|
| A | B |
|---|---|

1200-1 436 (700-1)

1280-1 706 (800-1)

LIRL Rwy 17-35 L
ROCKWALL, TEXAS
Orig-C 30APR15

32°56'N-96°26'W

RALPH M HALL/ROCKWALL MUNI (F46)
RNAV (GPS) RWY 35