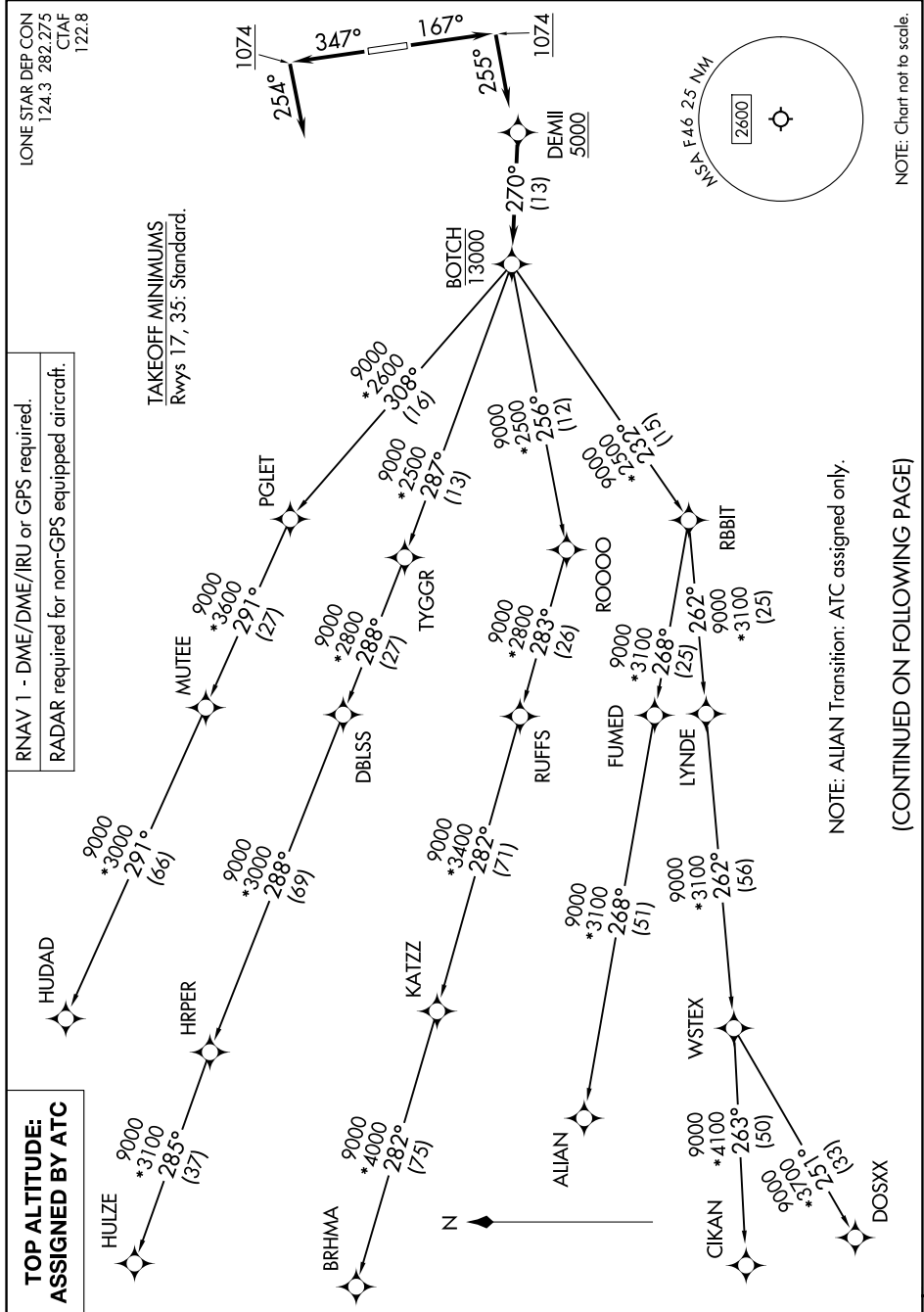


BOTCH ONE DEPARTURE (RNAV)

ROCKWALL, TEXAS



NOTE: Chart not to scale.

NOTE: ALIAN Transition: ATC assigned only.

(CONTINUED ON FOLLOWING PAGE)

SC-2, 07 AUG 2025 to 04 SEP 2025

BOTCH ONE DEPARTURE (RNAV)

(BOTCH1.BOTCH) 17APR25

ROCKWALL, TEXAS

RALPH M HALL/ROCKWALL MUNI (F46)