

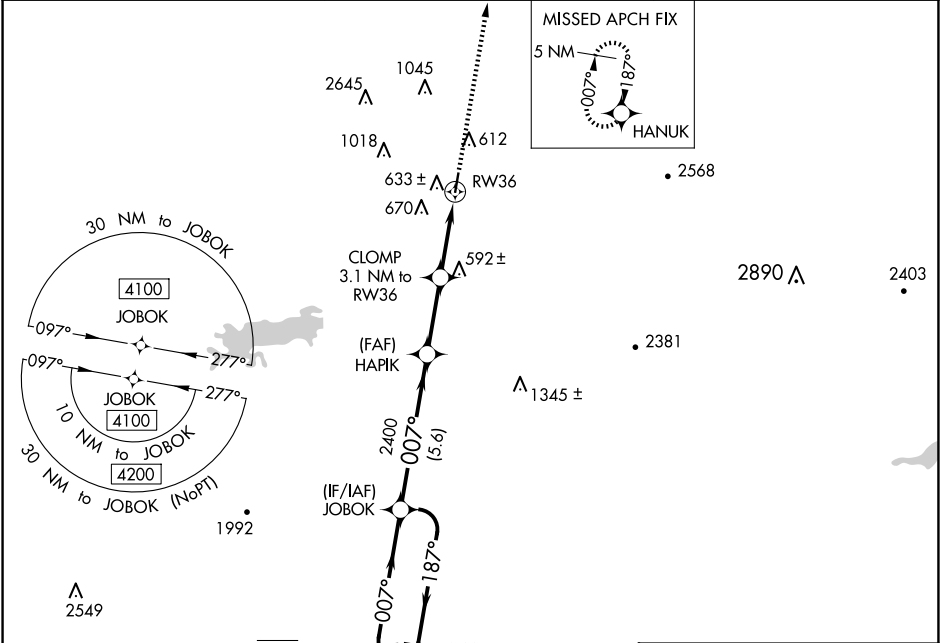
WAAS CH 61143 W36A	APP CRS 007°	Rwy Idg TDZE Apt Elev	4007 451 451
--	------------------------	-----------------------------	---

RNAV (GPS) RWY 36

ROBERT S KERR (RKR)

RNP APCH.	MISSED APPROACH: Climb to 4100 direct HANUK and hold, continue to climb-in-hold to 4100.
▼ Rwy 36 helicopter visibility reduction below ¾ SM NA. For uncompensated Baro-VNAV systems, LNAV/VNAV NA below -15°C or above 54°C. ▲ Circling NA for Cats C and D West of Rwy 18-36.	

AWOS-3 120.625	RAZORBACK APP CON * 120.9 343.75	UNICOM 122.8 (CTAF) 0
--------------------------	--	---------------------------------



5 NM Holding Pattern		JOBOK		HAPIK		CLOMP 3.1 NM to RW36		4100		HANUK	
6000 ← 187°		007° →		007°		2400		*1.1 NM to RW36		*LNAV only.	
4100				2400		*1500		RW36			
GP 3.05°											
TCH 40											
		5.6 NM		2.8 NM		2 NM		1.1			
CATEGORY		A		B		C		D			
LPV DA				701-1		250 (300-1)					
LNAV/ VNAV DA				786-1		335 (400-1)					
LNAV MDA		840-1		389 (400-1)		840-1½		389 (400-1½)			
CIRCLING		1000-1		1100-1		1100-1¾		1160-2¼			
		549 (600-1)		649 (700-1)		649 (700-1¾)		709 (800-1¼)			

