

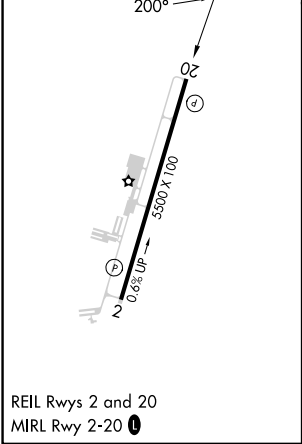
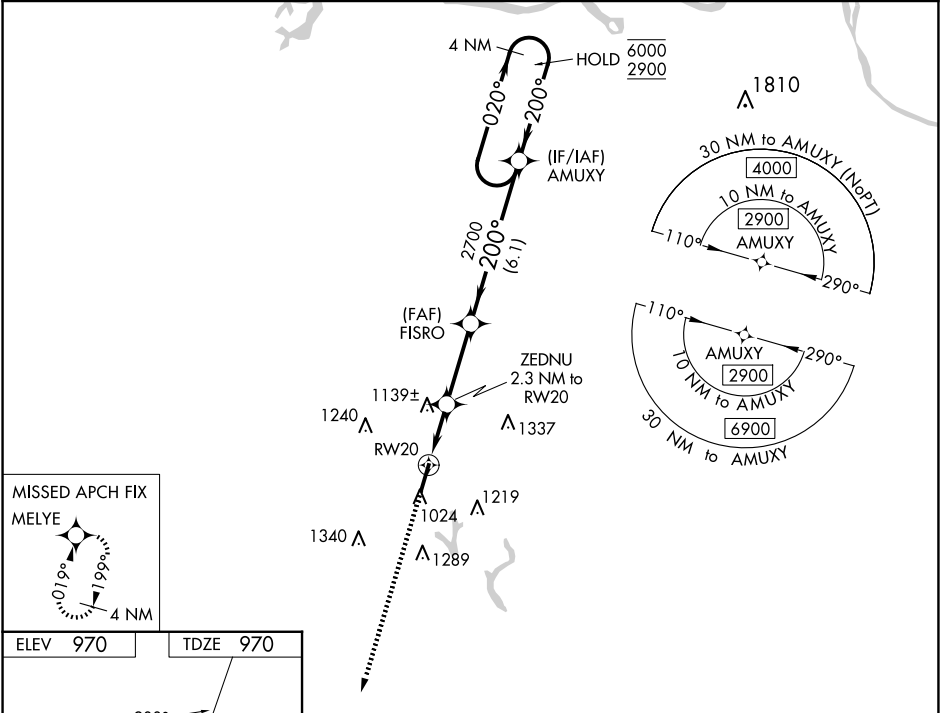
WAAS CH 50514 W20A	APP CRS 200°	Rwy Ldg TDZE 970 Apt Elev 970
--	------------------------	---



RNAV (GPS) RWY 20

CULLMAN RGNL/FOLSOM FLD (CMD)

RNP APCH - GPS.	MISSED APPROACH: Climb to 3200 direct MELYE and hold.
For uncompensated Baro-VNAV systems, LNAV/VNAV NA below -16°C or above 54°C. Circling Rwy 2 NA at night. Rwy 20 helicopter visibility reduction below ¾ SM NA.	

AWOS-3PT 124.175	HUNTSVILLE APP CON★ 118.05 239.0	UNICOM 122.8 (CTAF) 0
----------------------------	--	---------------------------------



3200 ↑		MELYE 		VGSI and RNAV glidepath not coincident (VGSI Angle 3.00/TCH 33).		4 NM AMUXY Holding Pattern	
RW20 		1.2 NM to RW20 ↓		ZEDNU 2.3 NM to RW20		FISRO 2700 200°	
		1740		2700		020° → 6000 ← 200° 2900	
		GP 3.00° TCH 50					
-1.2 NM		-1.1 NM		3 NM		6.1 NM	
CATEGORY		A		B		C	
LPV DA		1220-¾		250 (300-¾)			
LNAV/VNAV DA		1378-1½		408 (500-1½)			
LNAV MDA		1400-1 430 (500-1)		1400-1½ 430 (500-1½)			
CIRCLING		1480-1 510 (600-1)		1500-1 530 (600-1)		1600-1¾ 630 (700-1¾)	
						1640-2 670 (700-2)	