

APP CRS

Rwy Idg

3900

089°

TDZE

690

Apt Elev

690

RNAV (GPS) RWY 9

LITCHFIELD MUNI (3LF')

RNP APCH.

When local altimeter setting not received, use Taylorville altimeter setting and increase all MDA 80 feet and LNAV Cat C visibility to 1½ SM.
VDP NA with Taylorville altimeter setting. Rwy 9 helicopter visibility reduction below ¾ SM NA.

MISSED APPROACH: Climb to 3000 direct AFGUZ and hold.

AWOS-3PT

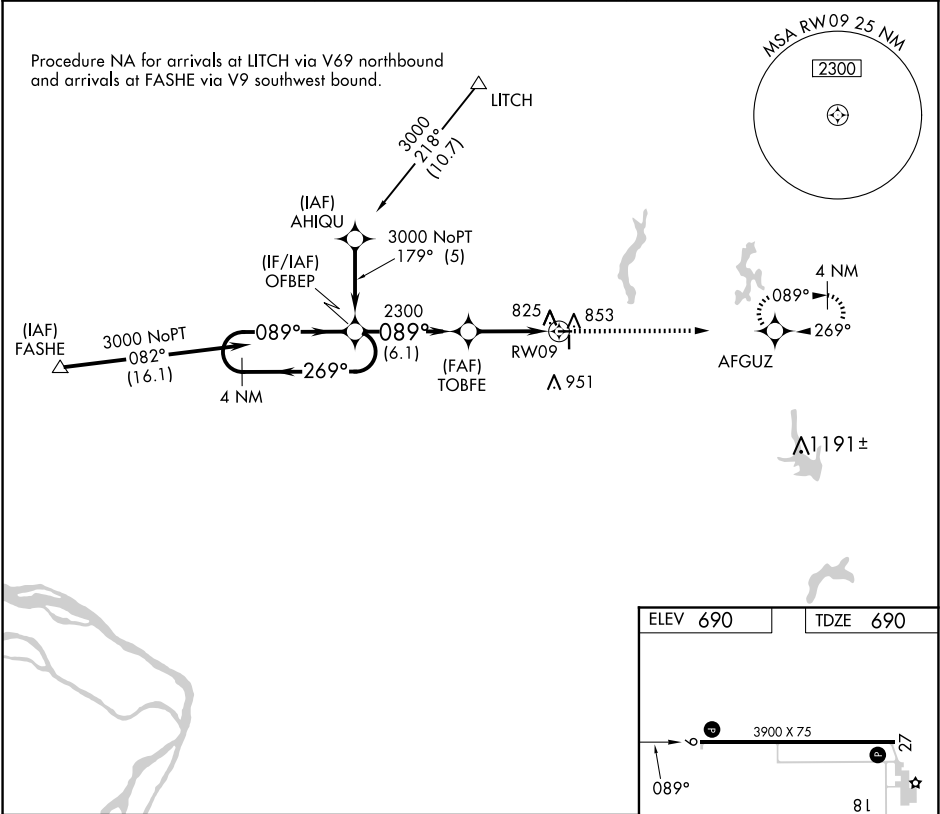
118.175

ST. LOUIS APP CON

124.2 353.9

UNICOM

122.8 (CTAF) 0



4 NM Holding Pattern

OFBEP

3000

269°

089°

089°

2300

3.05° TCH 40

1.2 NM to RW09

3.7 NM

1.2

3000

AFGUZ

VGSI and descent angles not coincident (VGSI Angle 3.00/TCH 25).

CATEGORY

A

B

C

D

LNAV MDA

1140-1

450 (500-1)

1140-1¾

450 (500-1¾)

NA

ELEV 690

TDZE 690

3900 X 75

27

81

4002 X 75

36

089°

MRL Rwy 9-27 and 18-36

REIL Rwy 9, 18, 27 and 36