

WAAS CH <b>58203</b> <b>W18A</b>	APP CRS <b>179°</b>	Rwy Idg TDZE <b>686</b> Apt Elev <b>691</b>	<b>4002</b>
--	------------------------	---	-------------

RNAV (GPS) RWY 18

LITCHFIELD MUNI (3LF')

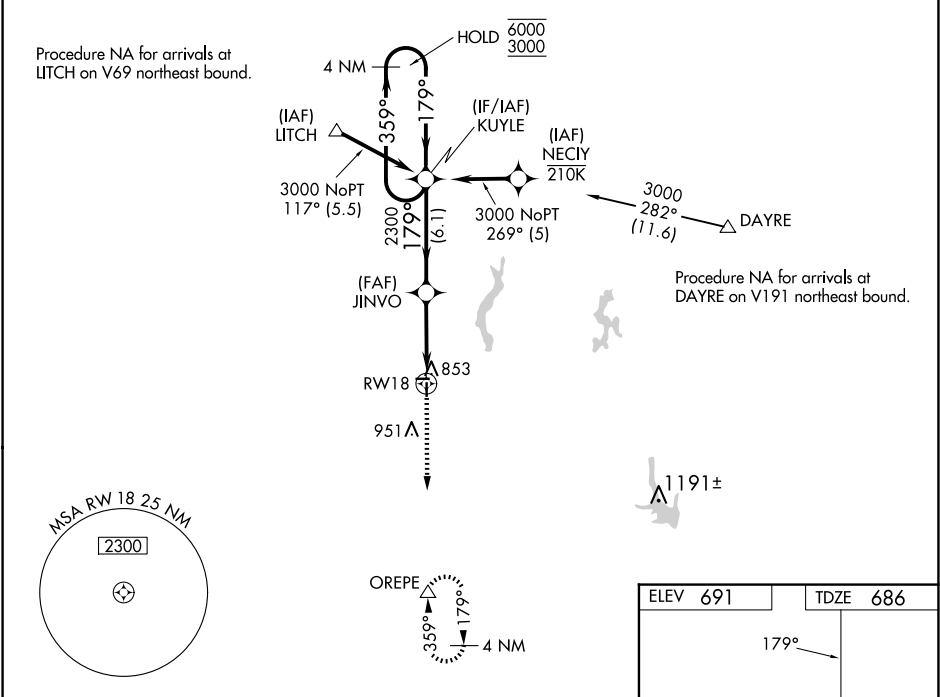
RNP APCH - GPS.

⚠

Baro-VNAV and VDP NA when using Taylorville altimeter setting. Rwy 18 helicopter visibility reduction below ¾ SM NA. For uncompensated Baro-VNAV systems, LNAV/VNAV NA below -16°C or above 54°C. When local altimeter setting not received, use Taylorville altimeter setting and increase LPV DA to 1025 feet and all visibilities ½ SM, increase LNAV/VNAV DA to 1146 feet and all visibilities ¼ SM, increase all MDAs 80 feet and LNAV visibility Cat C ½ SM.

MISSED APPROACH: Climb to 3000 direct OREPE and hold.

AWOS-3PT <b>118.175</b>	ST. LOUIS APP CON <b>124.2 353.9</b>	UNICOM <b>122.8 (CTAF) 0</b>
----------------------------	---	---------------------------------



4 NM Holding Pattern		VGSI and RNAV glidepath not coincident (VGSI Angle 3.00/TCH 23).		3000	OREPE
KUYLE		JINVO	2300	1.3 NM to RWY 18	RWY 18
GP 3.00° TCH 40		6.1 NM	3.6 NM	1.3	
CATEGORY	A	B	C	D	
LPV DA	952-7/8 266 (300-7/8)			NA	
LNAV/VNAV DA	1073-1 387 (400-1 3/8)			NA	
LNAV MDA	1120-1 434 (500-1)		1120-1 434 (500-1 1/4)		NA

