

CAMP MACKALL, NORTH CAROLINA

RNAV (GPS) RWY 12

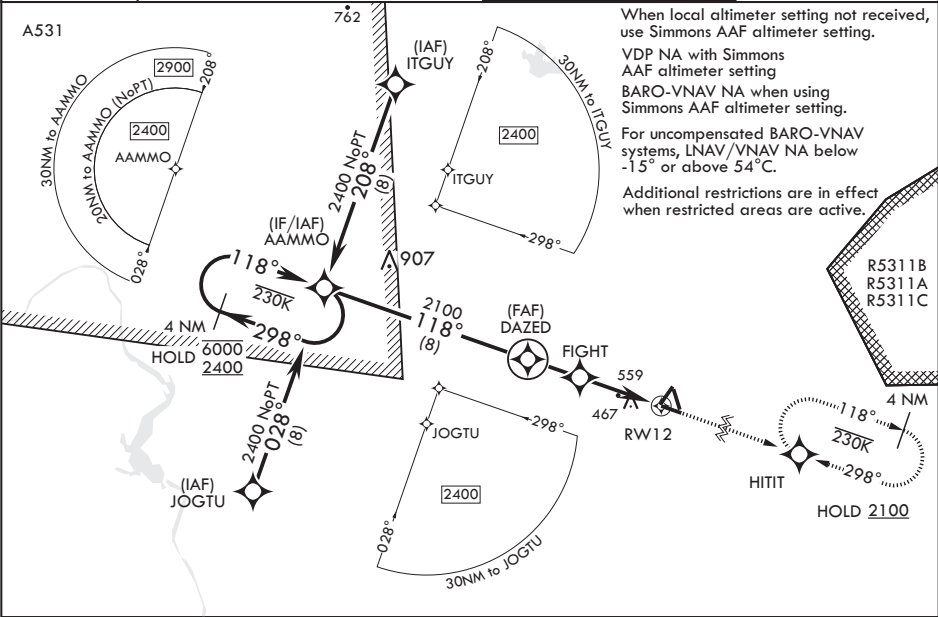
WAAS CH 92382 W12A	APCH CRS 118°	Rwy ldg TDZE Arpt Elev	4794 375 376
--------------------------	------------------	------------------------------	--------------------

AL-6315 (USA)

MACKALL AAF (KHFF)

RNP APCH-GPS	MISSED APPROACH: Climb to 2100 direct HITIT and hold.
* When tower closed, increase vis to 1 mile. ** Circling NA to RWYs 4,16,22, and 34.	

D-ATIS 141.4	FAYETTEVILLE APP CON/DEP CON 127.8 343.725	TOWER★ 121.0 (CTAF) 254.4	GND CON 128.35 251.05
-----------------	---	------------------------------	--------------------------



GP 3.00° TCH 55		2100 HITIT		ELEV 376	TDZE 375
CATEGORY	A	B	C	D	
LPV DA*	575-¾	200	(200-¾)		
LNAV/VNAV DA	851-1⅓	476	(500-1%)		
LNAV MDA	840-1 465 (500-1)	840-1⅓ 465 (500-1⅓)			
CIRCLING**	860-1 484 (500-1)	880-1 504 (600-1)	980-1¼ 604 (700-1¼)	1040-2 664 (700-2)	
SIMMONS AAF ALTIMETER SETTING MINIMUMS					
LPV DA*	659-⅞	284	(300-⅞)		
LNAV/VNAV DA	935-1⅓	560	(600-1%)		
LNAV MDA	940-1 565 (600-1)	940-1⅓ 565 (600-1⅓)			
CIRCLING**	960-1 584 (600-1)	980-1 604 (700-1)	1080-2 704 (800-2)	1140-2½ 764 (800-2½)	
MIRL Rwy 12-30					

CAMP MACKALL, NORTH CAROLINA

35°02'N - 79°30'W

MACKALL AAF (KHFF)

Amdt 1 10AUG23

RNAV (GPS) RWY 12

SE-2, 07 AUG 2025 to 04 SEP 2025

SE-2, 07 AUG 2025 to 04 SEP 2025