

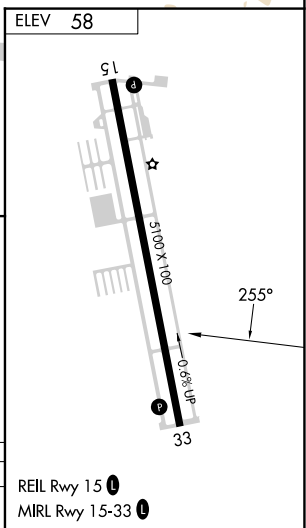
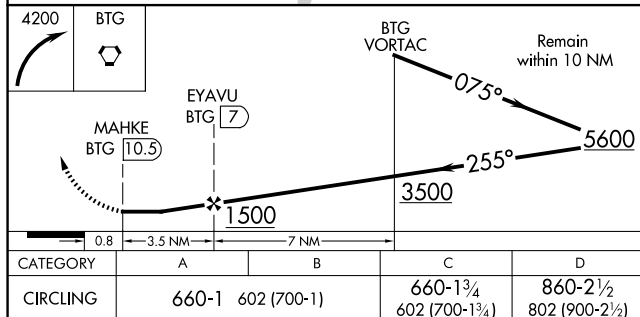
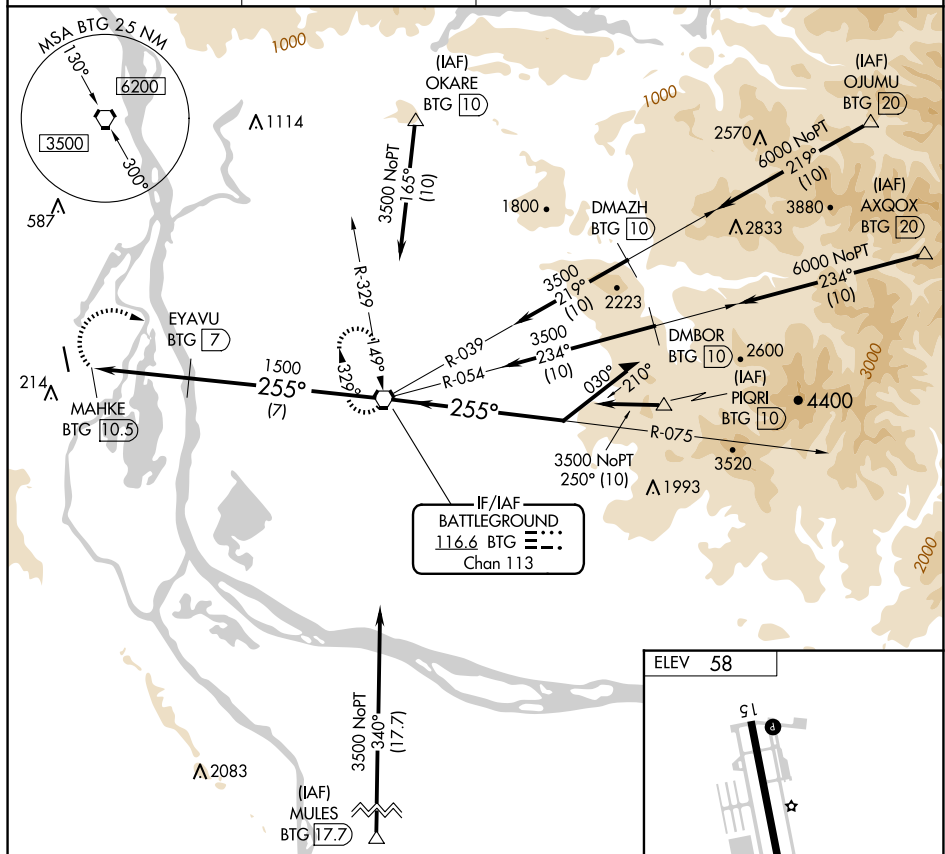


VOR/DME-A
SCAPPOOSE (SPB)

- | | | |
|---|--|---|
|   | <p>Circling to Rwy 15 NA at night. Circling NA west of Rwy 15-33. When local altimeter setting not received, use Portland Intl altimeter setting; increase all MDAs 40 feet. Increase Circling Cat D visibility $\frac{1}{4}$ SM.</p> | <p>MISSED APPROACH: Climbing right turn to 4200 direct BTG VORTAC and hold, continue climb-in-hold to 4200.</p> |
|---|--|---|

| | | | |
|------------------------|---|---------------------------|---------------------------------|
| ASOS 135.875 | PORTLAND APP CON 124.35 299.2 | CLNC DEL 121.65 | UNICOM 122.8 (CTAF) 0 |
|------------------------|---|---------------------------|---------------------------------|



NW-1, 07 AUG 2025 to 04 SEP 2025