

WAAS CH 65720 W15A	APP CRS 152°	Rwy Ldg 5100 TDZE 58 Apt Elev 58
--	------------------------	---

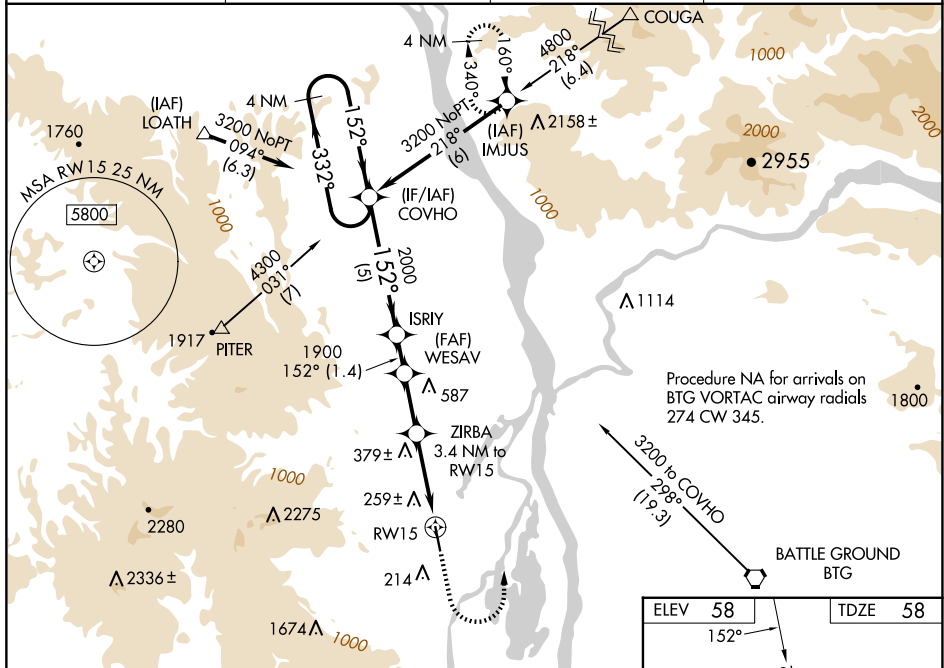
RNAV (GPS) RWY 15
SCAPPOOSE (SPB)

RNP APCH-GPS.

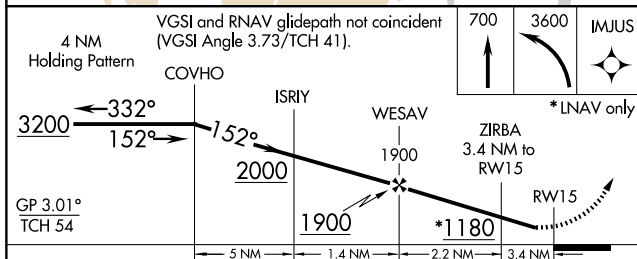
T Circling NA west of Rwy 15-33. Rwy 15 helicopter visibility reduction below 1 SM NA. When
A VGSI inop, Straight-in and Circling to Rwy 15 NA at night. When local altimeter setting not
 received, use Portland Intl altimeter setting; increase all DA/MDA 40 feet and increase
 LNAV/VNAV all Cats visibility $\frac{1}{8}$ SM, Circling Cat D visibility $\frac{1}{2}$ SM. For uncompensated
 Baro-VNAV systems, LNAV/VNAV NA below -15°C (5°F) or above 42°C (107°F).

MISSED APPROACH:
Climb to 700 then
climbing left turn to
3600 direct IMJUS
and hold.

ASOS 135.875	PORTLAND APP CON 124.35 299.2	CLINC DEL 121.65	UNICOM 122.8 (CTAF) 0
------------------------	---	----------------------------	---------------------------------



NW-1, 07 AUG 2025 to 04 SEP 2025



CATEGORY		A		B		C		D	
LPV	DA	350-1		292 (300-1)					
LNAV/ VNAV	DA	580-1¾		522 (600-1¾)					
LNAV	MDA	640-1	582 (600-1)			640-1¾		582 (600-1¾)	
CIRCLING		660-1	602 (700-1)			660-1¾ 602 (700-1¾)		860-2½ 802 (900-2½)	

