

WAAS CH 90216 W27A	APP CRS 274°	Rwy Idg 5390 TDZE 552 Apt Elev 569
----------------------------------------	------------------------	---------------------------------------------------------------

RNAV (GPS) RWY 27

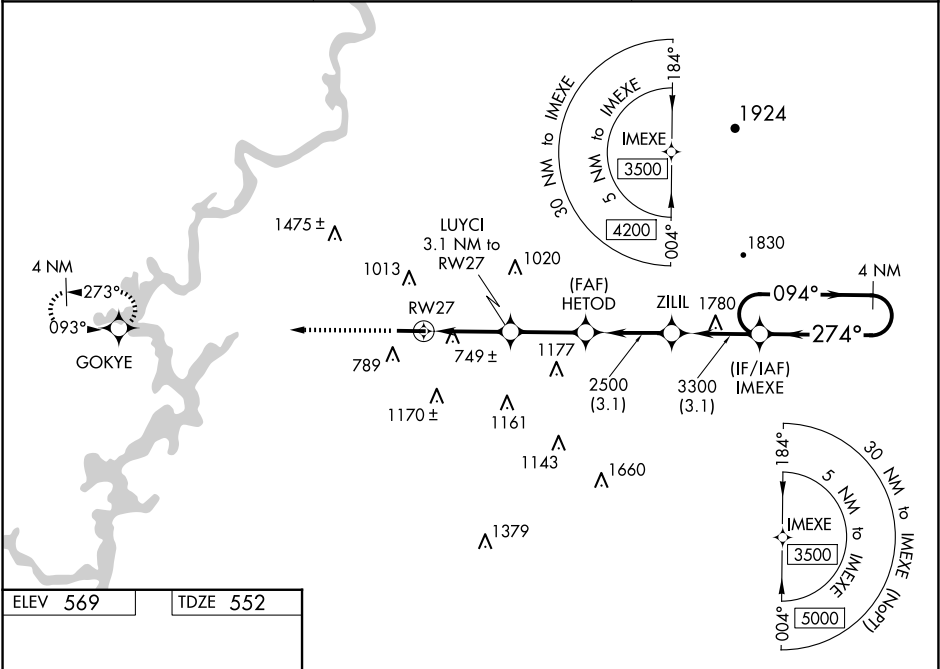
MERKEL FLD SYLACAUGA MUNI (SCD)

▼ For uncompensated Baro-VNAV systems, LNAV/VNAV NA below -16°C (4°F) or above 48°C (118°F). Baro-VNAV and VDP NA when using Birmingham altimeter setting.

▲ DME/DME RNP-0.3 NA. When local altimeter setting not received, use Birmingham altimeter setting and increase LPV DA to 889 feet, LNAV/VNAV DA to 1161 feet, and all visibilities ¾ mile. Increase all MDA 100 feet and LNAV Cat C and D visibilities ¼ mile.

MISSED APPROACH:
Climb to 3200 direct
GOKYE and hold.

AWOS-3PT 119.125	BIRMINGHAM APP CON 123.8 256.8	UNICOM 122.8 (CTAF) 0
----------------------------	------------------------------------------	---------------------------------



ELEV 569	TDZE 552	
<div><div>☆</div><div>274° to RW27</div><div>0.4% UP</div><div>5390 X 100</div><div>27</div></div>		
<div><div>3200</div><div>GOKYE</div><div>VGSI and RNAV glidepath not coincident (VGSI Angle 3.00/TCH 40).</div><div>4 NM Holding Pattern</div></div>		
<div><div>*LNAV only.</div><div>LUYCI 3.1 NM to RW27</div><div>HETOD 2500</div><div>ZILIL 3300</div><div>IMEXE</div><div>274°</div><div>094°</div><div>3500</div><div>GP 3.10° TCH 48</div></div>		
<div><div>1.3 NM</div><div>1.8 NM</div><div>2.7 NM</div><div>3.1 NM</div><div>3.1 NM</div></div>		
CATEGORY	A	B C D
LPV DA		802-¾ 250 (300-¾)
LNAV/VNAV DA		1074-1¾ 522 (600-1¾)
LNAV MDA	1000-1 448 (500-1)	1000-1¾ 448 (500-1¾)
CIRCLING	1140-1 571 (600-1)	1400-1¼ 831 (900-1¼) 1620-3 1051 (1100-3) 1700-3 1131 (1200-3)