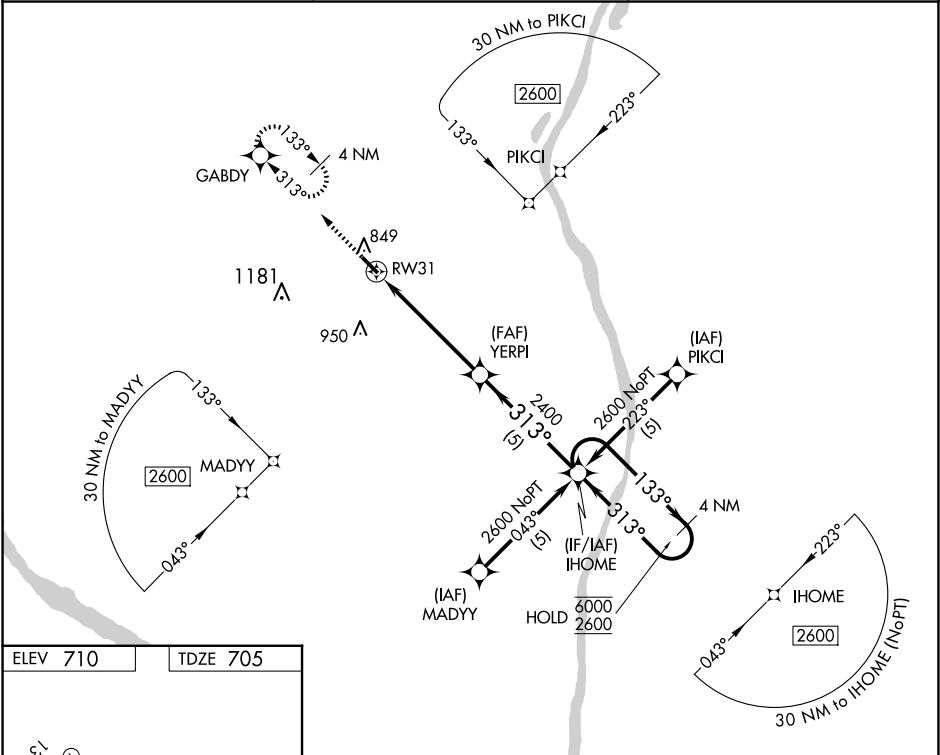


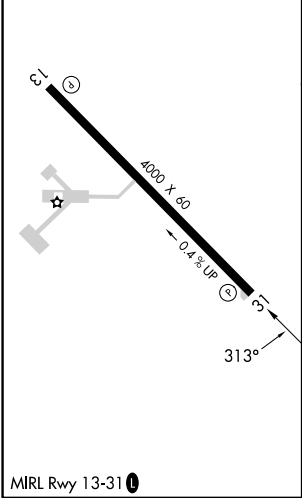
APP CRS	Rwy Idg	4000
313°	TDZE	705
	Apt Elev	710

RNAV (GPS) RWY 31  
PITTSFIELD PENSTONE MUNI (PPQ)

RNP APCH. ▼ For uncompensated Baro-VNAV systems, LNAV/VNAV NA below -16°C or above 54°C.		MISSED APPROACH: Climb to 2600 direct GABDY and hold.
AWOS-3PT 118.525	KANSAS CITY CENTER 126.225 317.775	UNICOM 122.8 (CTAF) 0



ELEV 710	TDZE 705
----------	----------



2600 GABDY VGSI and RNAV glidepath not coincident (VGSI Angle 3.00°/TCH 29).		4 NM Holding Pattern	
* LNAV only.		IHOME	
RW31		YERPI	
1.4 NM to RW31		2400	
3.8 NM		5 NM	
CATEGORY		A	
LNAV/VNAV DA		970-1 265 (300-1)	
LNAV MDA		1160-1 455 (500-1)	
CIRCLING		1160-1 450 (500-1)	
		1240-1 530 (600-1)	
		1340-1 630 (700-1 3/4)	
		NA	