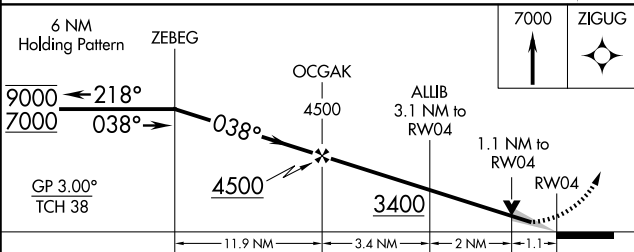
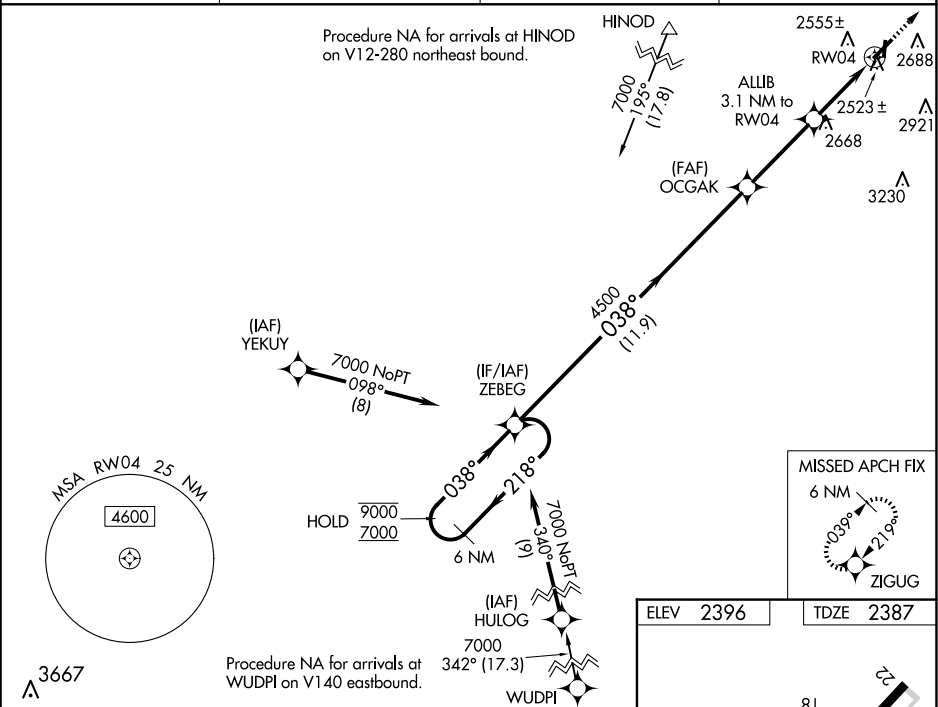



# RNAV (GPS) RWY 4

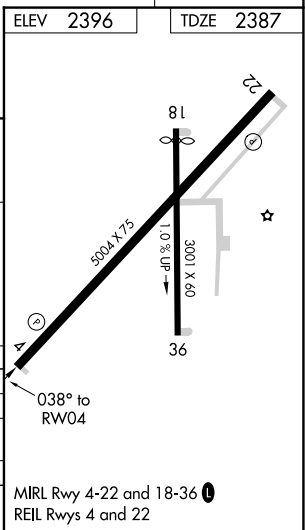
## HEMPHILL COUNTY (HHE)

**MISSED APPROACH:**  
Climb to 7000 direct  
ZIGUG and hold,  
continue climb-in-hold  
to 7000.

AWOS-3 <b>119.025</b>	ALBUQUERQUE CENTER <b>127.85 285.475</b>	KANSAS CITY CENTER <b>126.95 379.2</b>	CTAF <b>122.9 0</b>
--------------------------	---	---	------------------------



CATEGORY		A	B	C	D
LPV	DA	2637-1		250 (300-1)	
RNAV/ VNAV	DA	2684-1		297 (300-1)	
RNAV	MDA	2780-1	393 (400-1)	2780-1 $\frac{1}{8}$	393 (400-1 $\frac{1}{8}$ )
 CIRCLING		3040-1	644 (700-1)	3280-2 $\frac{3}{4}$ 884 (900-2 $\frac{3}{4}$ )	3340-3 944 (1000-3)



SC-2, 07 AUG 2025 to 04 SEP 2025