

WAAS CH <b>72833</b> <b>W09A</b>	APP CRS <b>093°</b>	Rwy Ldg TDZE <b>856</b> Apt Elev <b>858</b>
--	------------------------	---

RNAV (GPS) RWY 9

KEWANEE MUNI (EZI)

RNP APCH.

**NA** Rwy 9 helicopter visibility reduction below ¾ SM NA. Baro-VNAV NA. Use Galesburg altimeter setting, when not received, use Moline altimeter setting and increase all DA to 1210 feet and all visibilities ½ SM; increase all MDA 40 feet, and Circling Cat C visibility ¼ SM.

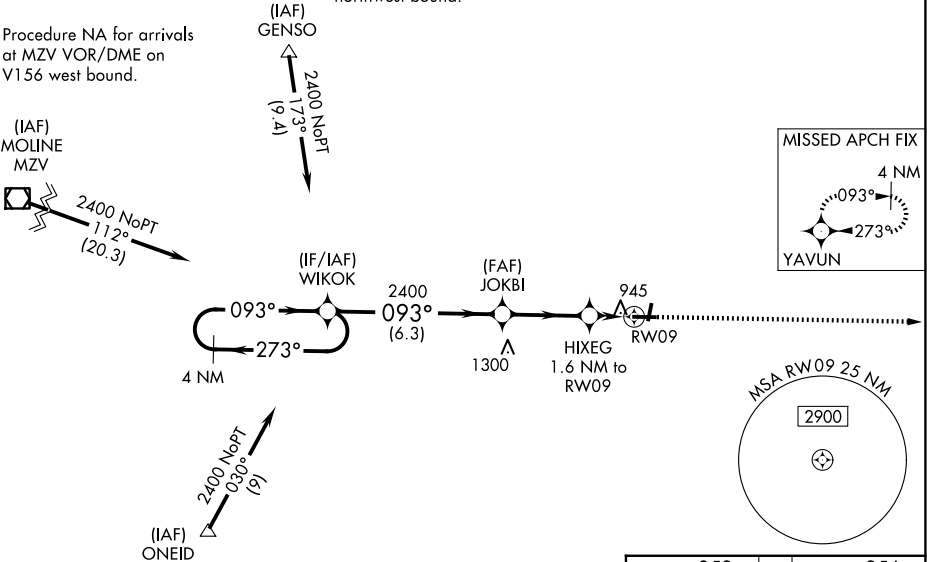
**MISSED APPROACH:**  
Climb to 2500 direct YAVUN and hold.

QUAD CITY APP CON ★  
**133.275 257.8**

UNICOM  
**122.8 (CTAF) 0**

Procedure NA for arrivals  
at GENSO on V129  
northwest bound.

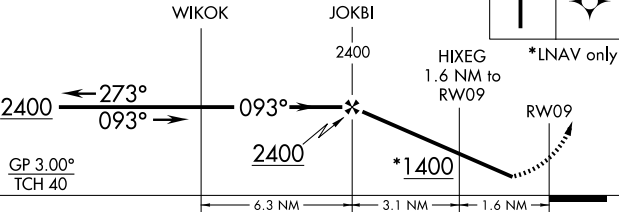
Procedure NA for arrivals  
at MZV VOR/DME on  
V156 west bound.



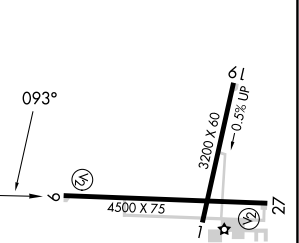
4 NM  
Holding Pattern

VGSI and RNAV glidepath not coincident  
(VGSI Angle 3.50/TCH 27).

2500  
YAVUN



ELEV 858 TDZE 856



CATEGORY	A	B	C	D
LPV DA	1181-1⅛	325 (400-1⅛)		NA
LNAV/VNAV DA	1181-1⅛	325 (400-1⅛)		NA
LNAV MDA	1300-1	444 (500-1)	1300-1⅛ 444 (500-1⅛)	NA
CIRCLING	1340-1 482 (500-1)	1520-1 662 (700-1)	1520-1⅛ 662 (700-1⅛)	NA

MIRL Rwy 1-19 and 9-27 0