

WAAS CH <b>50333</b> <b>W01A</b>	APP CRS <b>013°</b>	Rwy Ldg TDZE <b>857</b> Apt Elev <b>858</b>
--	------------------------	---

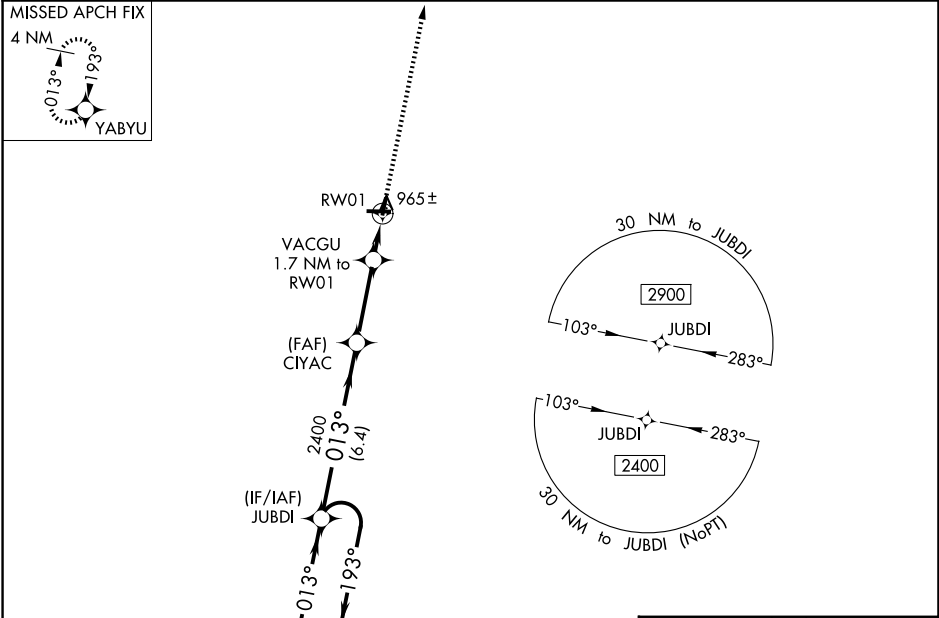
RNAV (GPS) RWY 1

KEWANEE MUNI (EZI)

**Baro-VNAV NA. DME/DME RNP-0.3 NA. Helicopter visibility reduction below ¼ SM NA.**  
**Use Galesburg altimeter setting; when not received, use Moline altimeter setting and increase all DA 29 feet and all MDA 40 feet, increase LPV all Cats visibility ⅛ mile, and Circling Cat C visibility ¼ mile.**

**MISSED APPROACH:**  
Climb to 2400 direct YABYU and hold.

QUAD CITY APP CON ★ <b>133.275 257.8</b>	UNICOM <b>122.8 (CTAF) 0</b>
---	---------------------------------



4 NM Holding Pattern		*RNAV only		2400	YABYU
CATEGORY		A	B	C	D
LPV	DA	1182-1⅛ 325 (400-1⅛)			NA
RNAV/VNAV	DA	1212-1¼ 355 (400-1¼)			NA
RNAV MDA		1300-1 443 (500-1)	1300-1⅛ 443 (500-1⅛)		NA
CIRCLING		1340-1 482 (500-1)	1520-1 662 (700-1)	1520-1⅜ 662 (700-1⅜)	NA

