

WAAS CH 78339 W36A	APP CRS 002°	Rwy Idg 3200 TDZE 654 Apt Elev 654
--	------------------------	---

RNAV (GPS) RWY 36

RNP APCH.

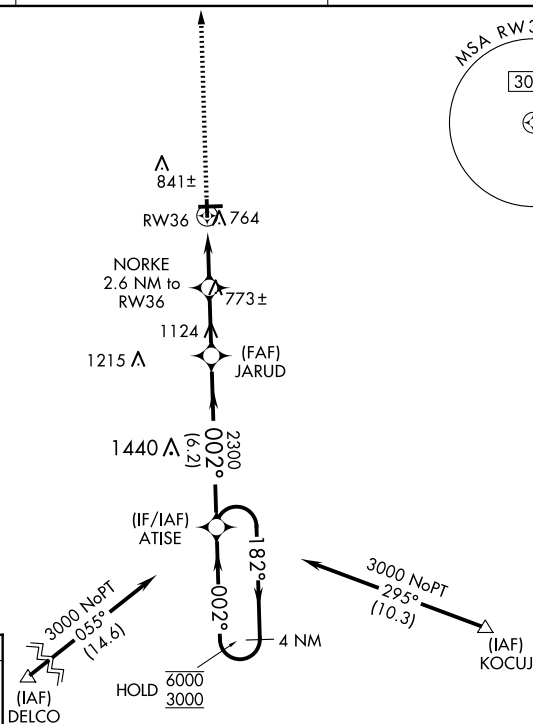
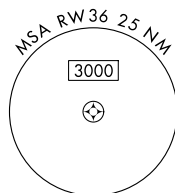
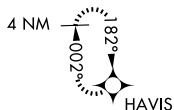


For uncompensated Baro-VNAV systems, procedure NA below -16°C or above 54°C.
Circling Rwy 18 NA at night.

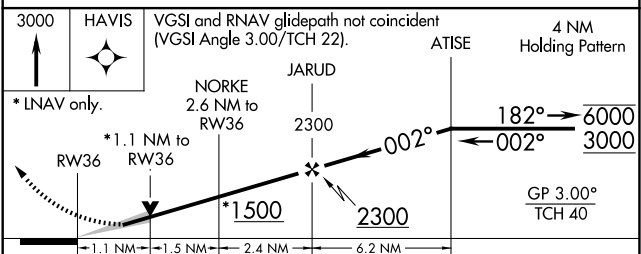
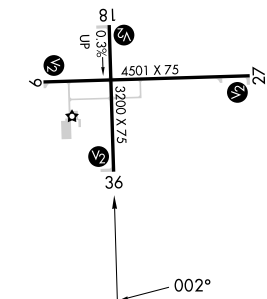
MISSED APPROACH:
Climb to 3000 direct
HAVIS and hold.

AWOS-3 124.175	HULMAN APP CON 125.45 339.8	UNICOM 123.0 (CTAF) 0
--------------------------	---------------------------------------	---------------------------------

MISSED APCH FIX



ELEV 654	TDZE 654
REIL Rwy 27	
MIRL Rwy 9-27 and 18-36 L	



CATEGORY		A	B	C	D
LPV	DA	904-1		250 (300-1)	
LNAV/ VNAV	DA	925-1		271 (300-1)	
LNAV	MDA	1020-1		366 (400-1)	
C CIRCLING		1080-1 426 (500-1)	1120-1 466 (500-1)	1200-1½ 546 (600-1½)	1320-2 666 (700-2)