

PARIS, ILLINOIS

AL-6298 (FAA)

23054

WAAS CH 61239 W27A	APP CRS 272°	Rwy Idg TDZE Apt Elev	4501 651 654
----------------------------------------	------------------------	-----------------------------	-----------------------------------------

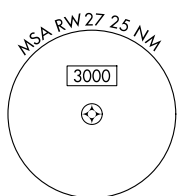
RNAV (GPS) RWY 27
EDGAR COUNTY (PRG)

RNP APCH.

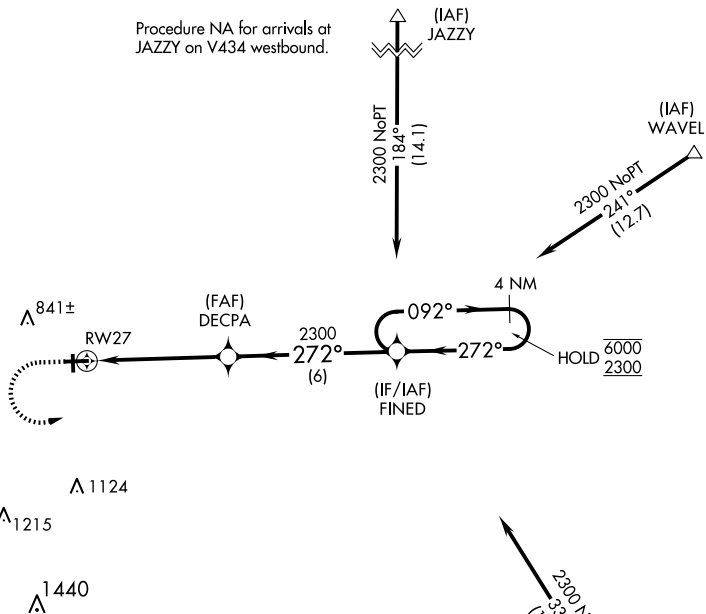
T Circling Rwy 18 NA at night. Rwy 27 helicopter visibility reduction below $\frac{3}{4}$ SM NA.
A For uncompensated Baro-VNAV systems, LNAV/VNAV NA below -16°C or above 54°C.

MISSED APPROACH:
Climb to 1120 then
climbing left turn to 2300
direct **FINED** and hold.

AWOS-3 124.175	HULMAN APP CON 125.45 339.8	UNICOM 123.0 (CTAF) 0
--------------------------	---------------------------------------	---------------------------------

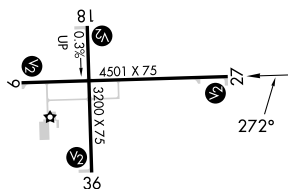


Procedure NA for arrivals at
JAZZY on V434 westbound.

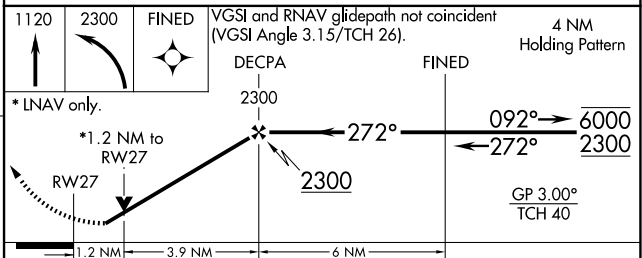



ELEV 654		TDZE 651
----------	--	----------

Procedure NA for arrivals on TTH VORTAC
airway radials 254 CW 303.



0	2300	FINED	VGSI and RNAV glide (VGSI Angle 3.15/TCH
---	------	-------	---------------------------------------------



CATEGORY		A	B	C	D
LPV	DA	901-1		250 (300-1)	
LNNAV/ VNAV	DA	925-1		274 (300-1)	
LNNAV	MDA	1080-1	429 (500-1)	1080-1¼	429 (500-1¼)
 CIRCLING		1080-1 426 (500-1)	1120-1 466 (500-1)	1200-1½ 546 (600-½)	1320-2 666 (700-2)

REIL Rwy 27
MIRL Rwys 9-27 and 18-36 **L**

PARIS, ILLINOIS

Amdt 1C 25FEB21

39°42'N-87°40'W

EDGAR COUNTY (PRG)

RNAV (GPS) RWY 27

EC-3, 07 AUG 2025 to 04 SEP 2025