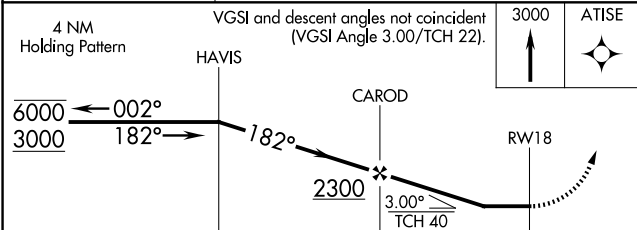
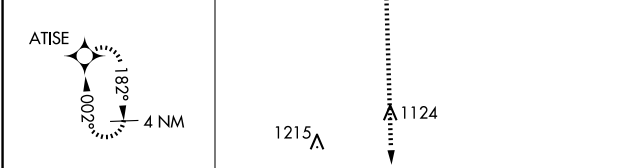
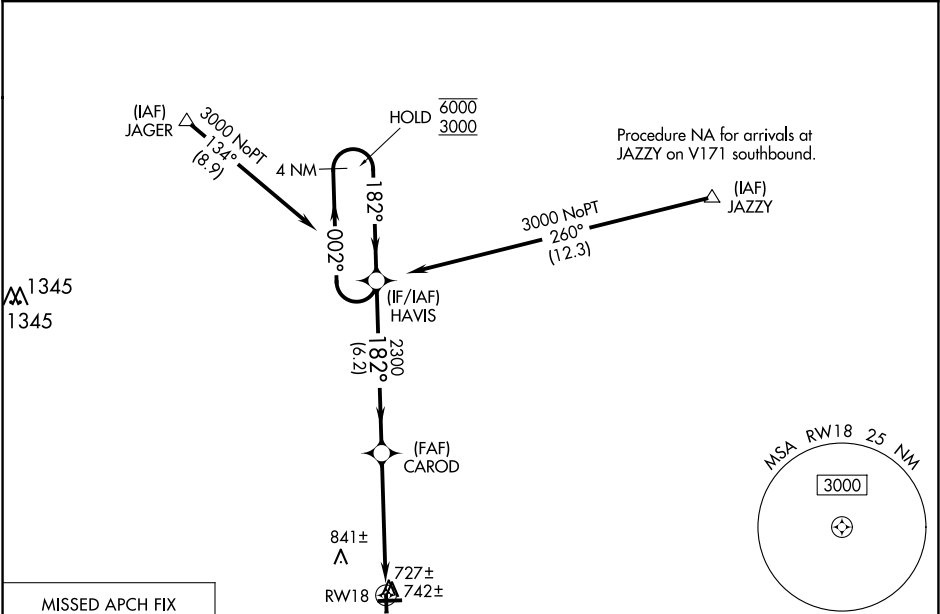


WAAS CH <b>82639</b> <b>W18A</b>	APP CRS <b>182°</b>	Rwy Idg TDZE <b>654</b> Apf Elev <b>654</b>	<b>3200</b> <b>654</b> <b>654</b>
--	------------------------	---	---

RNAV (GPS) RWY 18

EDGAR COUNTY (PRG)

RNP APCH.		MISSED APPROACH: Climb to 3000 direct ATISE and hold.
	Rwy 18 helicopter visibility reduction below 1 SM NA. Straight-in Rwy 18 NA at night, Circling Rwy 18 NA at night.	
AWOS-3 <b>124.175</b>	HULMAN APP CON <b>125.45 339.8</b>	UNICOM <b>123.0 (CTAF) 1</b>



CATEGORY	A	B	C	D
LP MDA		980-1	326 (400-1)	
LNAV MDA		1000-1	346 (400-1)	
CIRCLING	1080-1 426 (500-1)	1120-1 466 (500-1)	1200-1½ 546 (600-1½)	1320-2 666 (700-2)

