

| | | | |
|--|------------------------|-----------------------------|---|
| WAAS CH 82335 W19A | APP CRS 189° | Rwy Idg TDZE Apt Elev | 5000 1077 1077 |
|--|------------------------|-----------------------------|---|

RNAV (GPS) RWY 19

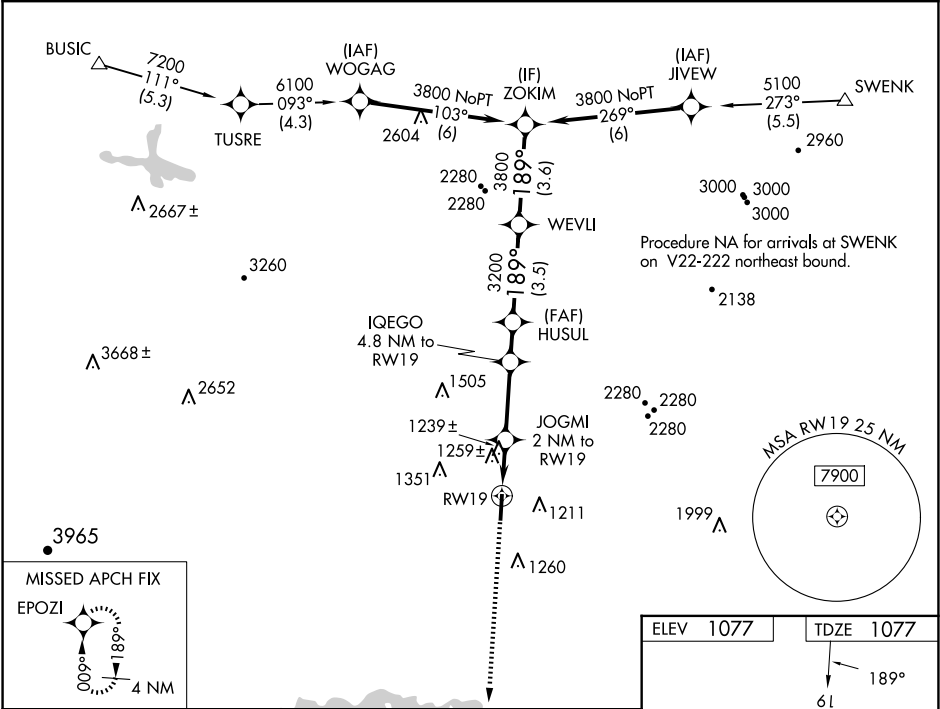
RUTHERFORD COUNTY/MARCHMAN FLD (FQD)

DME/DME RNP-0.3 NA. When local altimeter setting not received, use Shelby-Cleveland County Rgnl altimeter setting and increase all MDA 80 feet and increase LP and LNAV Cat C and D ½ mile, increase Circling Cat C and D visibility ¼ mile. Rwy 19 helicopter visibility reduction below ¾ mile NA.

MISSED APPROACH:

Climb to 3000 direct EPOZI and hold.

| | | |
|--------------------------|---------------------------------------|---------------------------------|
| AWOS-3 118.275 | GREER APP CON ★ 119.4 350.2 | UNICOM 122.8 (CTAF) 0 |
|--------------------------|---------------------------------------|---------------------------------|



| | | |
|------------|---|--|
| | <div>3000</div> <div>EPOZI</div> | |
| *LNAV only | <div>JOGMI 2 NM to RW19</div> <div>*1 NM to RW19</div> <div>RW19</div> <div>*1780</div> <div>2720</div> <div>≤3.15°</div> <div>TCH 40</div> | <div>IQEGO 4.8 NM to RW19</div> <div>HUSUL</div> <div>WEVLI</div> <div>ZOKIM</div> <div>3800</div> <div>3200</div> <div>3800</div> |
| | 1 NM | 1 NM 2.8 NM 1.4 NM 3.5 NM 3.6 NM |
| CATEGORY | A | B C D |
| LP MDA | 1500-1 423 (500-1) | 1500-1¼ 423 (500-1¼) |
| LNAV MDA | 1520-1 443 (500-1) | 1520-1⅜ 443 (500-1⅜) |
| CIRCLING | 1560-1 483 (500-1) | 1620-1 543 (600-1) 1640-1½ 563 (600-1½) 1820-2½ 743 (800-2½) |

