

WAAS CH 69212 W25A	APP CRS 252°	Rwy Idg TDZE 913 Apt Elev 913
--	------------------------	---

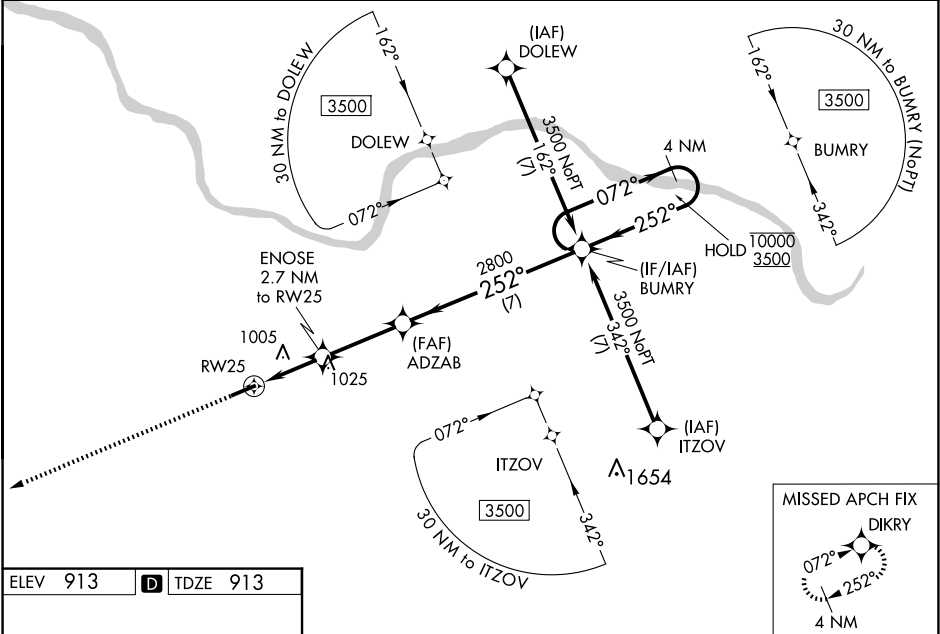
RNAV (GPS) RWY 25
FLEMING-MASON (F'GX)

RNP APCH - GPS.

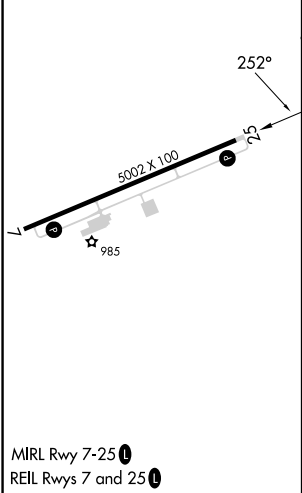
Baro-VNAV and VDP NA when using Blue Grass altimeter setting. For uncompensated Baro-VNAV systems, LNAV/VNAV NA below -16°C or above 54°C. When local altimeter setting not received, use Lexington altimeter setting and increase LPV DA to 1240 feet and all visibilities ¼ SM; increase LNAV/VNAV DA to 1290 feet and all visibilities ¼ SM; increase all MDAs 140 feet and LNAV visibility Cat C/D ⅜ SM, and Circling visibility Cat C/D ½ SM.

MISSED APPROACH:
Climb to 3000 direct
DIKRY and hold.

AWOS-3 118.125	INDIANAPOLIS CENTER 124.225 360.725	UNICOM 123.0(CTAF) 0
--------------------------	---	--------------------------------



ELEV 913	D	TDZE 913
----------	----------	----------



	3000 ↑ DIKRY	ADZAB 2800	BUMRY 2800	10000 3500
	ENOSE 2.7 NM to RW25	1 NM to RW25	7 NM	GP 3.00° TCH 40
	1800	2800		
	1 NM	1.7 NM	3.1 NM	
CATEGORY	A	B	C	D
LPV DA	1113-¾ 200 (200-¾)			
LNAV/VNAV DA	1163-¾ 250 (300-¾)			
LNAV MDA	1260-1 347 (400-1)			
CIRCLING	1320-1 407 (500-1)	1380-1 467 (500-1)	1520-1¾ 607 (700-1¾)	1520-2 607 (700-2)

SE-1, 07 AUG 2025 to 04 SEP 2025

SE-1, 07 AUG 2025 to 04 SEP 2025