

WAAS CH <b>97628</b> <b>W06A</b>	APP CRS <b>058°</b>	Rwy Idg TDZE Apt Elev	<b>5004</b> <b>733</b> <b>733</b>
--	------------------------	-----------------------------	---

RNAV (GPS) RWY 6

DAVIDSON COUNTY EXEC (E.XX)

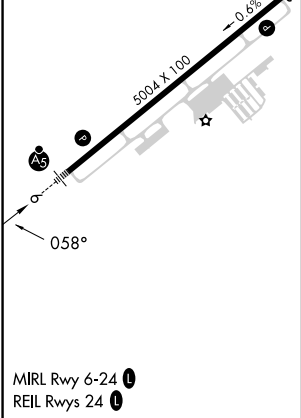
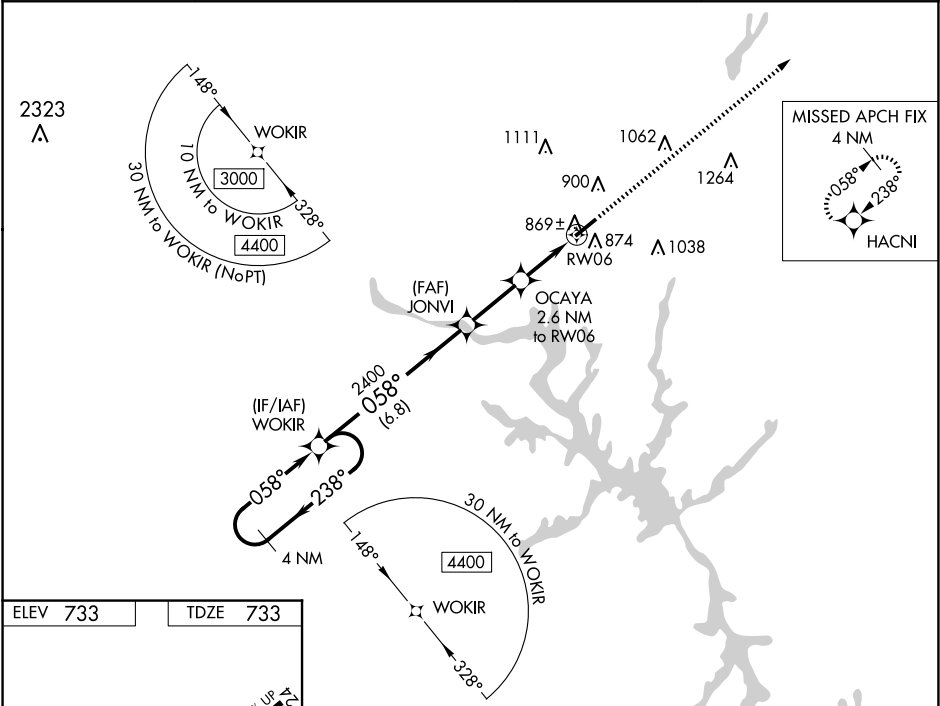
⚠

For uncompensated Baro-VNAV systems, LNAV/VNAV NA below -16°C (4°F) or above 54°C (130°F). When local altimeter setting not received, use Salisbury altimeter setting and increase all DA 37 feet and all MDA 40, increase LPV, LNAV/VNAV all Cats and LNAV Cat C visibility ½ mile. DME/DME RNP-0.3 NA. Baro-VNAV and VDP NA when using Salisbury altimeter setting.

MALSR

MISSED APPROACH:  
Climb to 3000 direct  
HACNI and hold.

AWOS-3 <b>119.825</b>	GREENSBORO APP CON <b>126.6 327.075</b>	GCO <b>135.075</b>	UNICOM <b>122.8 (CTAF) 0</b>
--------------------------	--	-----------------------	---------------------------------



4 NM Holding Pattern WOKIR				3000	HACNI
GP 3.00° TCH 40				*LNAV only	
6.8 NM				2.5 NM	1.8 NM
CATEGORY				A	B
LPV DA				983-7/8	250 (300-7/8)
LNAV/VNAV DA				1020-1	287 (300-1)
LNAV MDA				1120-1	387 (400-1)
CIRCLING				1220-1	1240-1
				487 (500-1)	507 (600-1)
					1340-1 3/4
					607 (700-1 3/4)
					NA