



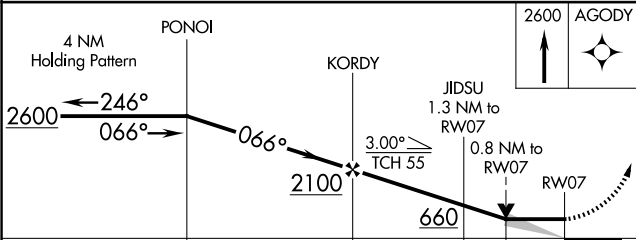
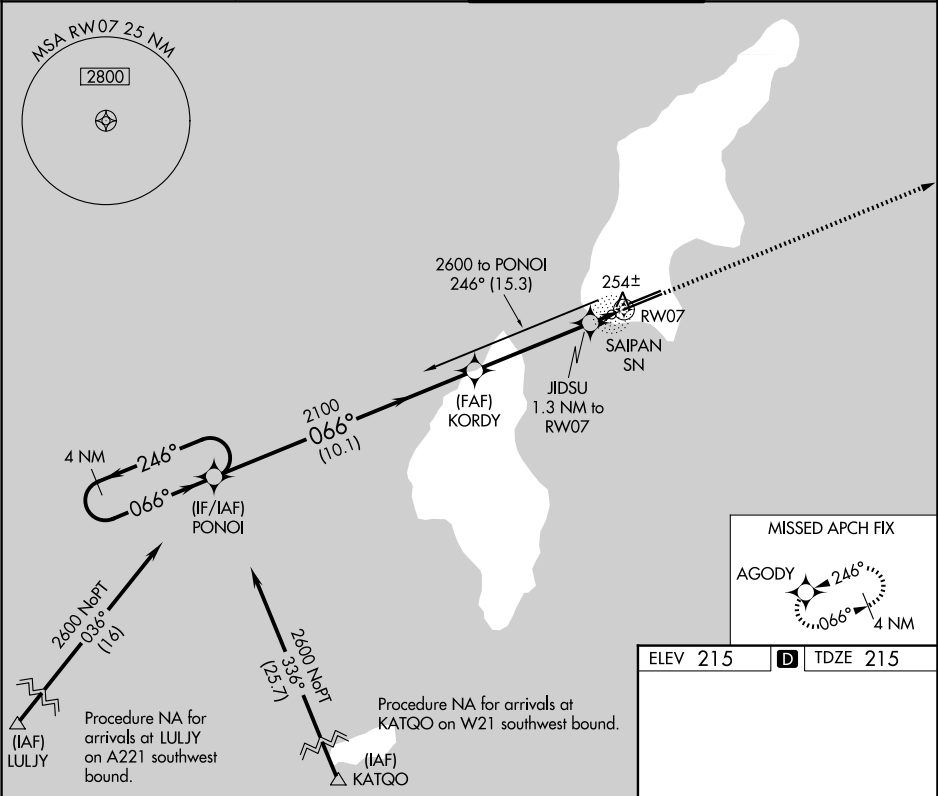
APP CRS	Rwy Ldg	8010
066°	TDZE	215
	Apt Elev	215

RNAV (GPS) RWY 7

FRANCISCO C ADA/SAIPAN INTL (GSN)(PGSN)

 Circling NA north of Rwy 6-24. DME/DME RNP-0.3 NA.	 MALSR	MISSED APPROACH: Climb 2600 direct AGODY and hold.
---	---	--

ATIS 127.2	GUAM CERAP 118.4 290.5	SAIPAN TOWER 125.7 256.9	GND CON 121.8
---------------	---------------------------	-----------------------------	------------------



CATEGORY	A	B	C	D
LNAV MDA	520-½ 305 (400-½)			
CIRCLING	720-1 505 (600-1)	720-½ 505 (600-½)	780-2 565 (600-2)	

