

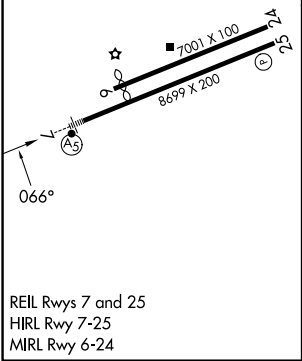
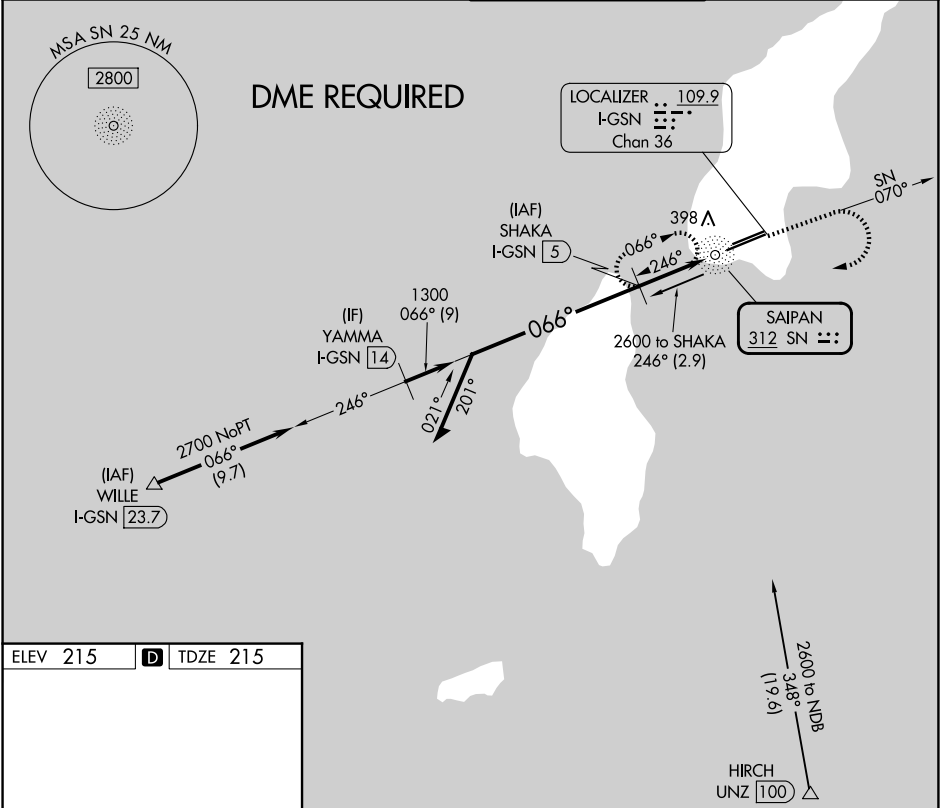
NDB SN	APP CRS	Rwy Ldg	8010
312	066°	TDZE	215
		Apt Elev	215

NDB Z RWY 7

FRANCISCO C ADA/SAIPAN INTL (GSN)(PGSN)

<div><div></div><div>Circling NA north of Rwy 6-24. DME required.</div></div>	<div><div>MALSRL</div><div><div></div><div>AS</div></div></div>	<div>MISSED APPROACH: Climb to 1600 on SN NDB bearing 070° then climbing right turn to 3000 direct SN NDB then on SN NDB bearing 246° to SHAKA/I-GSN 5 DME and hold.</div>
---	---	--

ATIS 127.2	GUAM CERAP 118.4 290.5	SAIPAN TOWER 125.7 256.9	GND CON 121.8
---------------	---------------------------	-----------------------------	------------------



	SHAKA I-GSN 5	1600 SN 070°	3000 SN 246°	SHAKA I-GSN 5
	2000	246°	066°	1300
	2.85°	TCH 57	I-GSN 3	SN NDB I-GSN 2.1
	2 NM	0.9 NM	0.5	
CATEGORY	A	B	C	D
S-7	760-3/4	545 (600-3/4)	760-1 1/8	545 (600-1 1/8)
CIRCLING	760-1	545 (600-1)	760-1 1/8	780-2
			545 (600-1 1/8)	565 (600-2)