



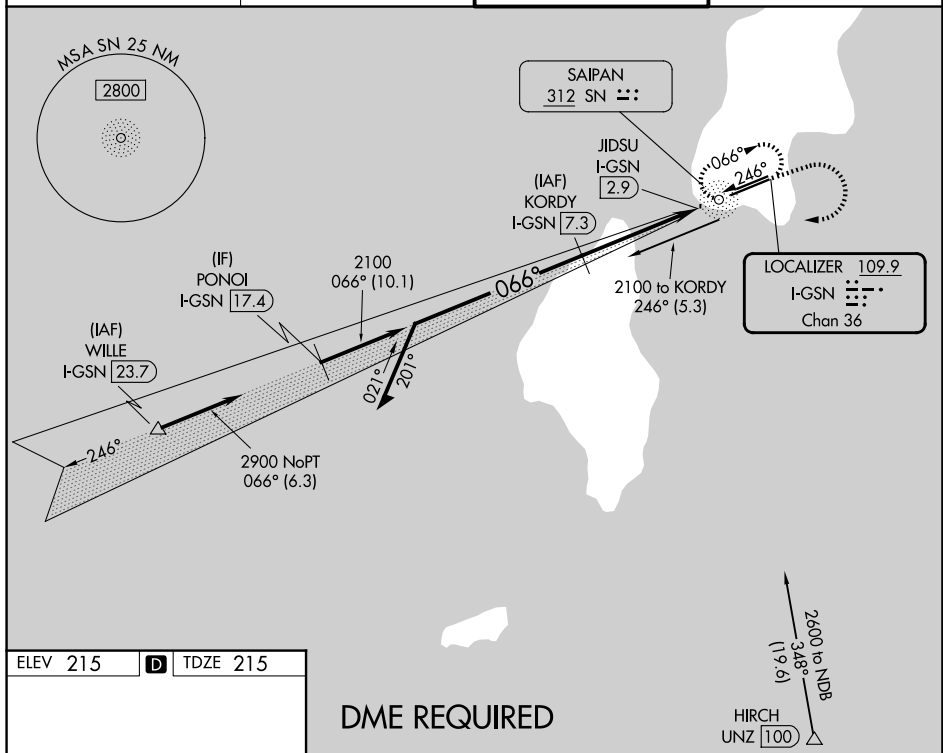
LOC/DME I-GSN 109.9 Chan 36	APP CRS 066°	Rwy Ldg 8010 TDZE 215 Apt Elev 215
---	------------------------	---

ILS or LOC RWY 7

FRANCISCO C ADA/SAIPAN INTL (GSN)(PGSN)

 NA	Circling NA north of Rwy 6-24. ADF and DME required.		MISSED APPROACH: Climb to 1600 then climbing right turn to 2800 direct SN NDB and hold.
--	---	---	---

ATIS 127.2	GUAM CERAP 118.4 290.5	SAIPAN TOWER 125.7 256.9	GND CON 121.8
---------------	---------------------------	-----------------------------	------------------



ELEV 215	D	TDZE 215
----------	----------	----------

DME REQUIRED

