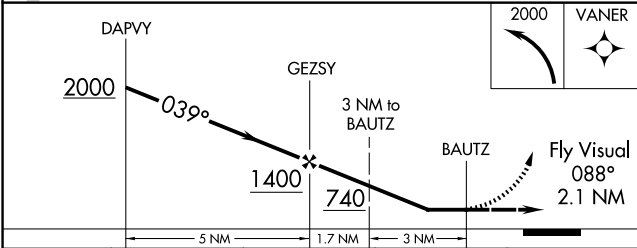
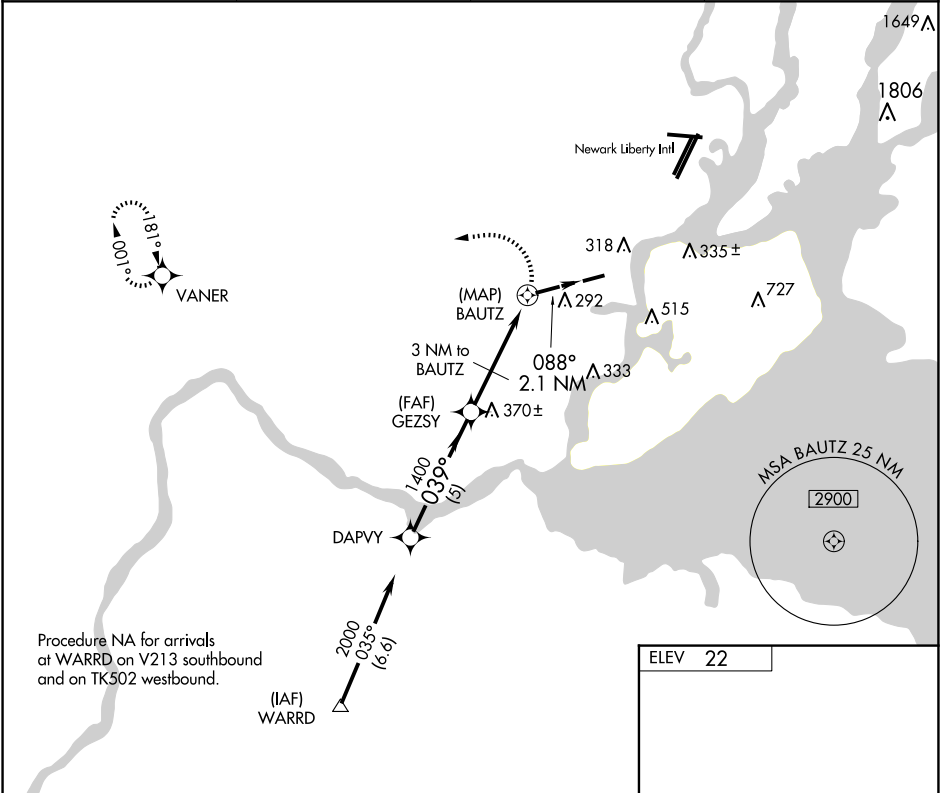


APP CRS	Rwy Idg	N/A
039°	TDZE	N/A
	Apt Elev	22

GPS-A  
LINDEN (LDJ)

RNP APCH - GPS		MISSED APPROACH: Climbing left turn to 2000 direct VANER WP and hold.	
▼ ▲ NA When local altimeter setting not received, use Newark Liberty Intl altimeter setting. Helicopter visibility reduction below 1 SM NA. Procedure NA at night.			
AWOS-3 124.025	NEWARK APP CON 128.55 379.9	CLNC DEL 127.25	UNICOM 123.0 (CTAF) 0



CATEGORY	A	B	C	D
CIRCLING	620-2½	598 (600-2½)	880-2½ 858 (900-2½)	NA
NEWARK ALTIMETER SETTING MINIMUMS				
CIRCLING	640-2½	618 (700-2½)	900-2½ 878 (900-2½)	NA

