

VOR/DME IOW

116.2

Chan 109

APP CRS

006°

Rwy Idg

4000

TDZE

752

Apt Elev

754

VOR RWY 36

WASHINGTON MUNI (AWG)

DME Required.

When local altimeter setting not received, use Iowa City altimeter setting and increase all MDAs 80 feet and visibility S-36 Cat C and Circling Cat C ¼ SM.

MISSED APPROACH: Climb to 2600 then right turn on IOW VOR/DME R-186 to SHIRN/21 DME and hold.

AWOS-3

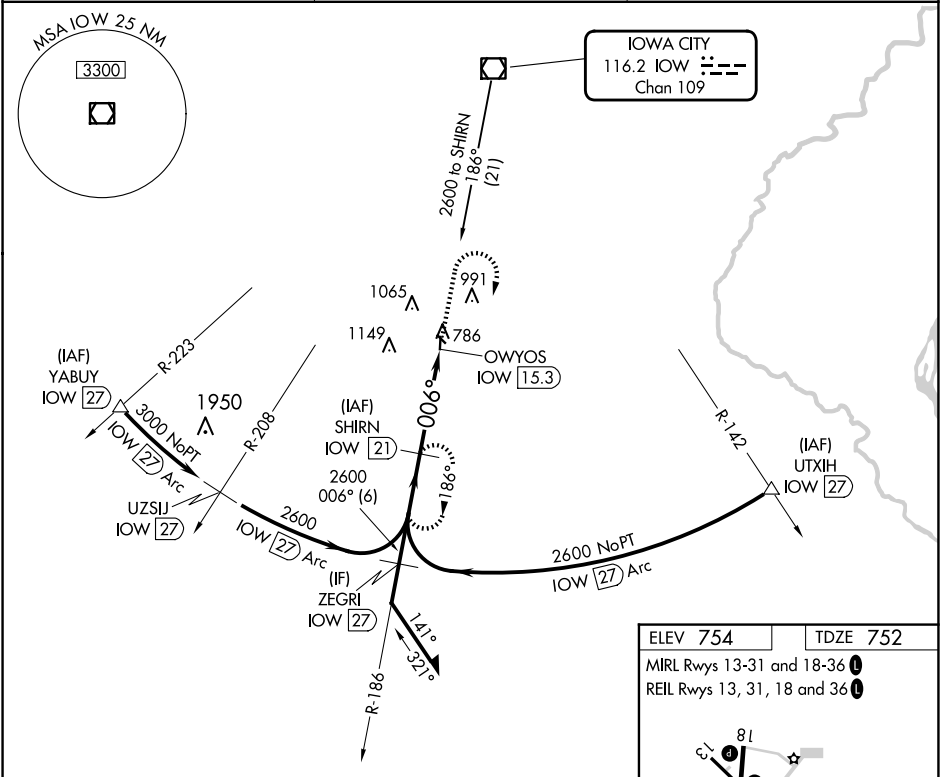
127.825

CHICAGO CENTER

135.6 370.95

UNICOM

122.7 (CTAF) 0



VGSI and descent angles not coincident (VGSI Angle 3.00/TCH 35).

Remain within 10 NM

2600

186°

006°

2600

006°

3.00°

TCH 40

5.7 NM

2600

↑

IOW R-186

SHIRN IOW [21]

OWYOS IOW [15.3]

CATEGORY	A	B	C	D
S-36	1240-1	488 (500-1)	1240-1⅓ 488 (500-1⅓)	NA
CIRCLING	1240-1 486 (500-1)	1260-1 506 (600-1)	1500-2¼ 746 (800-2¼)	NA

