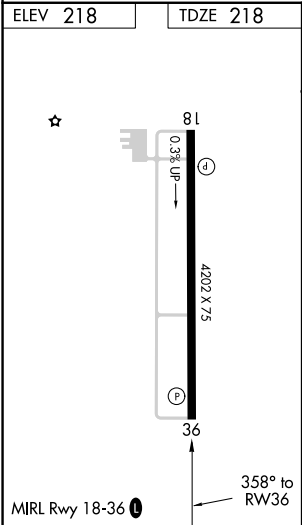
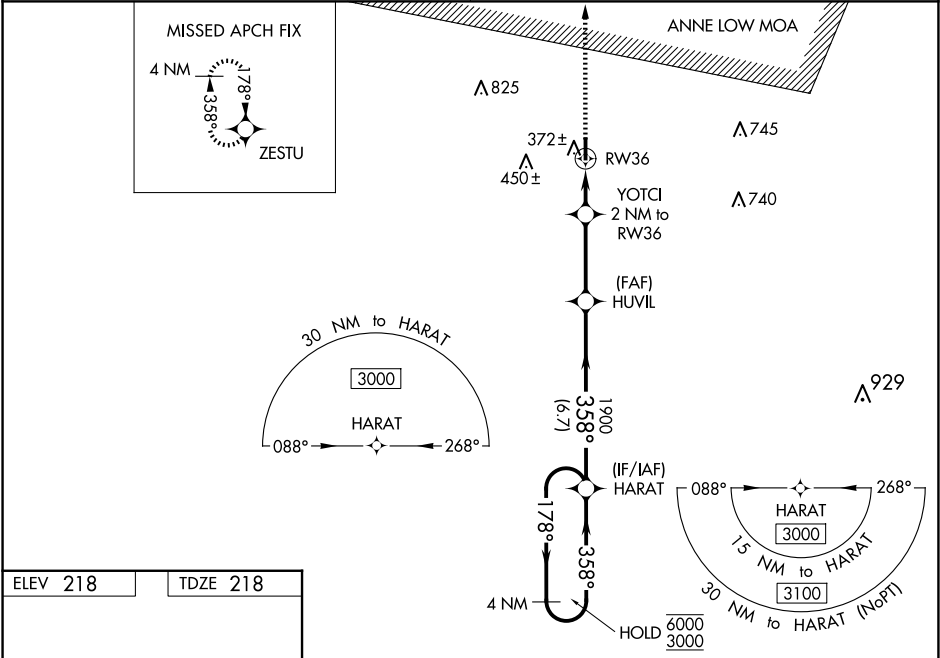


WAAS CH 61024 W36A	APP CRS 358°	Rwy Idg 4202 TDZE 218 Apt Elev 218
--	------------------------	---

RNAV (GPS) RWY 36
SPRINGHILL (SPH)

RNP APCH.	MISSED APPROACH: Climb to 3000 direct ZESTU and hold.
T NA Rwy 36 helicopter visibility reduction below ¾ SM NA. For uncompensated Baro-VNAV systems, procedure NA below -15°C or above 54°C.	

SHREVEPORT APP CON 123.75 360.725	UNICOM 122.8 (CTAF) 0
---	---------------------------------



3000	ZESTU	HUVIL	HARAT	4 NM Holding Pattern
YOTCI 2 NM to RW36	1900	358°	178°	6000
RW36	900	1900	358°	3000
2 NM	3.1 NM	6.7 NM		GP 3.00° TCH 54
CATEGORY	A	B	C	D
LPV DA	545-1	327 (400-1)		NA
LNAV/VNAV DA	638-1½	420 (500-1½)		NA
LNAV MDA	640-1	422 (500-1)	640-1¼ 422 (500-1¼)	NA
CIRCLING	700-1	482 (500-1)	820-1¾ 602 (700-1¾)	NA