

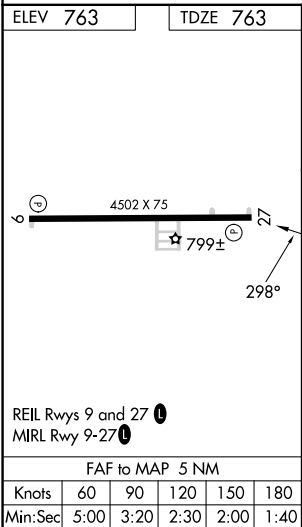
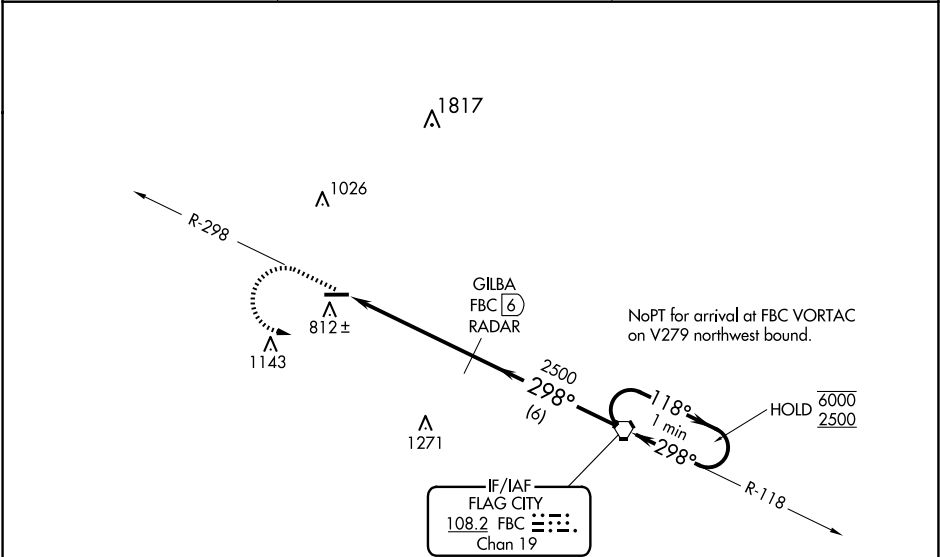
VORTAC FBC	APP CRS	Rwy Idg	4502
108.2	298°	TDZE	763
Chan 19		Apt Elev	763

VOR RWY 27

PUTNAM COUNTY (OWX)

RADAR or DME required.	MISSED APPROACH: Climb to 2500 on FBC VORTAC R-298 then left turn direct FBC VORTAC and hold.
<div><div>▼</div><div>Rwy 27 helicopter visibility reduction below 1 SM NA.</div></div> <div><div>▲</div><div>NA Straight-in, Circling Rwy 27 NA at night.</div></div>	

AWOS-3 120.525	TOLEDO APP COM 120.8 317.55	UNICOM 122.7 (CTAF) 0
--------------------------	---------------------------------------	---------------------------------



2500	FBC R-298	FBC	GILBA FBC (6) RADAR	FBC VORTAC	One Minute Holding Pattern
2500	298°	118°	298°	6000	2500
5 NM	6 NM				
CATEGORY	A	B	C	D	
S-27	1220-1	457 (500-1)	NA		
CIRCLING	1220-1	457 (500-1)	NA		