

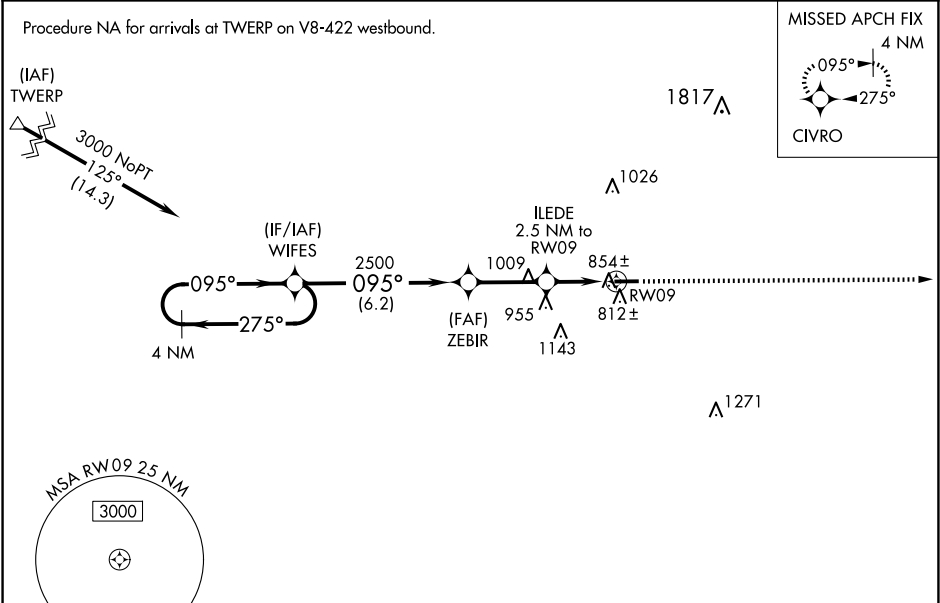
WAAS CH 86514 W09A	APP CRS 095°	Rwy Idg 4502 TDZE 760 Apt Elev 763
--	------------------------	---

RNAV (GPS) RWY 9

PUTNAM COUNTY (OWX)

RNP APCH.	For uncompensated Baro-VNAV systems, LNAV/VNAV NA below -16°C or above 54°C. Rwy 9 helicopter visibility reduction below ¾ SM NA. Baro-VNAV and VDP NA when using Findlay altimeter setting. When local altimeter setting not received, use Findlay altimeter setting and increase all DAs/MDAs 40 feet.	MISSED APPROACH: Climb to 3000 direct CIVRO and hold.
-----------	---	--

AWOS-3 120.525	TOLEDO APP CON 120.8 317.55	UNICOM 122.7 (CTAF) 0
--------------------------	---------------------------------------	--



4 NM Holding Pattern		WIFES	ZEBIR	ILEDE 2.5 NM to RWY09	3000 CIVRO
3000		275°	095°	095°	*LNAV only.
GP 3.00° TCH 40		2500	*1580	*1 NM to RWY09	4502 X 75
		6.2 NM	2.8 NM	1.5	1.0
CATEGORY	A	B	C	D	
LPV DA	1048-1	288 (300-1)	NA		
LNAV/ VNAV DA	1147-1 ½	387 (400-1 ½)	NA		
LNAV MDA	1120-1	360 (400-1)	NA		
CIRCLING	1200-1 437 (500-1)	1220-1 457 (500-1)	NA		
					REIL Rwy 9 and 27 0 MIRL Rwy 9-27 0

EC-2, 07 AUG 2025 to 04 SEP 2025

EC-2, 07 AUG 2025 to 04 SEP 2025