

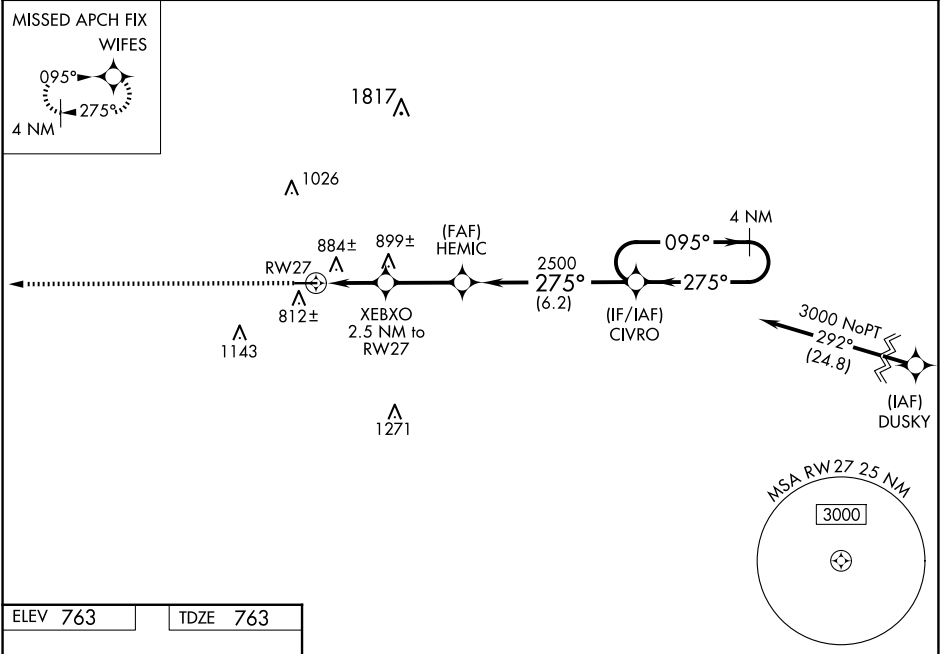
WAAS CH 97614 W27A	APP CRS 275°	Rwy Idg TDZE 763 Apt Elev 763
--	------------------------	---

RNAV (GPS) RWY 27

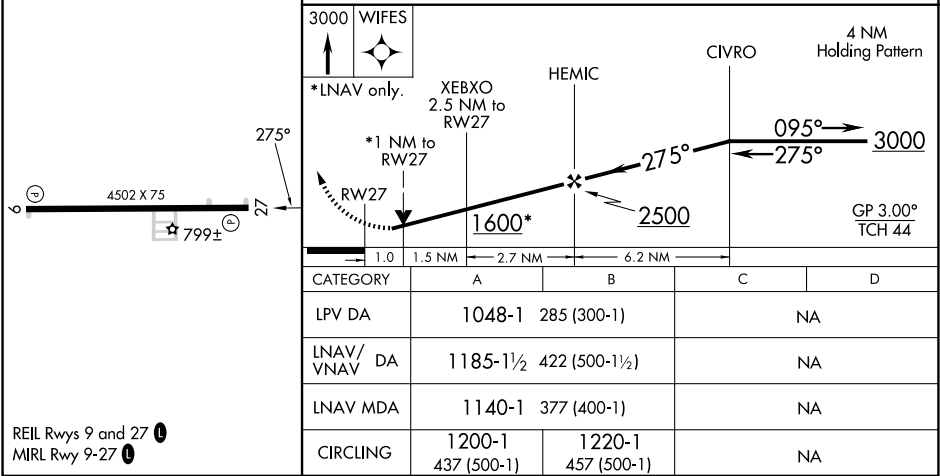
PUTNAM COUNTY (OWX)

RNP APCH. ▼ ▲ NA For uncompensated Baro-VNAV systems, LNAV/VNAV NA below -16°C or above 54°C . Baro-VNAV and VDP NA when using Findlay alimeter setting. Rwy 27 helicopter visibility reduction below ¾ SM NA. When local alimeter setting not received, use Findlay alimeter setting and increase all DAs/MDAs 40 feet.	MISSED APPROACH: Climb to 3000 direct WIFES and hold.
---	--

AWOS-3 120.525	TOLEDO APP CON 120.8 317.55	UNICOM 122.7 (CTAF) 0
--------------------------	---------------------------------------	---------------------------------



ELEV 763	TDZE 763
-----------------	-----------------



REIL Rwy 9 and 27 0
MIRL Rwy 9-27 0