

APP CRS	Rwy Idg	5005
182°	TDZE	319
	Apt Elev	324

RNAV (GPS) RWY 18

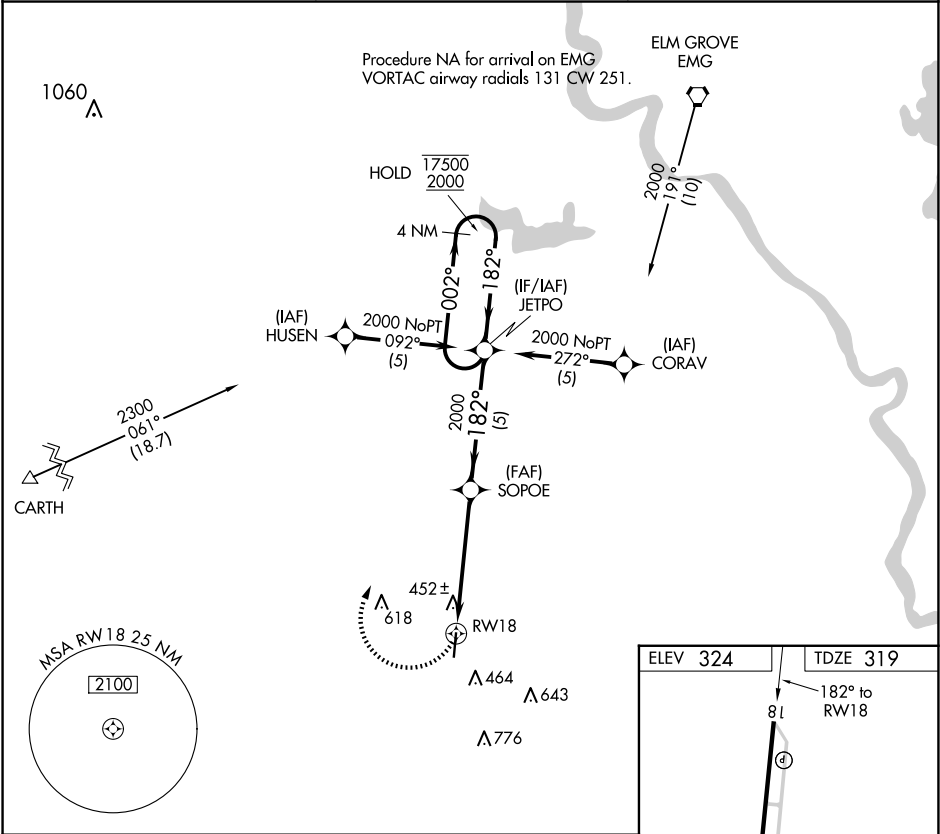
C E 'RUSTY' WILLIAMS (3F'3)

RNP APCH

Procedure NA at night. Rwy 18 helicopter visibility reduction below 1 SM NA. When local altimeter setting not received, use Shreveport Rgnl altimeter setting: increase Circling Cat C MDA 80 feet and visibility ½ SM.

MISSED APPROACH: Climbing right turn to 2000 direct JETPO and hold.

AWOS-3PT 119.125	SHREVEPORT APP CON ★ 119.9 335.55	UNICOM 122.8 (CTAF) 0
---------------------	--------------------------------------	--------------------------



2000

JETPO

VGSI and descent angles not coincident (VGSI Angle 3.00/TCH 50).

SOPOE

JETPO

4 NM Holding Pattern

RW18

182°

2000

002°

17500

2000

182°

3.00°

TCH 45

5.2 NM

5 NM

CATEGORY	A	B	C	D
RNAV MDA	780-1	461 (500-1)	780-1¼ 461 (500-1¼)	NA
CIRCLING	880-1	556 (600-1)	920-1½ 596 (600-1½)	NA

ELEV 324

TDZE 319

182° to RW18

81

5005 X 100

36

MIRL Rwy 18-36 0

REIL Rwy 18 and 36 0

SC-4, 07 AUG 2025 to 04 SEP 2025

SC-4, 07 AUG 2025 to 04 SEP 2025