

WAAS CH <b>69340</b> <b>W25A</b>	APP CRS <b>251°</b>	Rwy Idg <b>3504</b> TDZE <b>1254</b> Apt Elev <b>1255</b>
--	------------------------	---

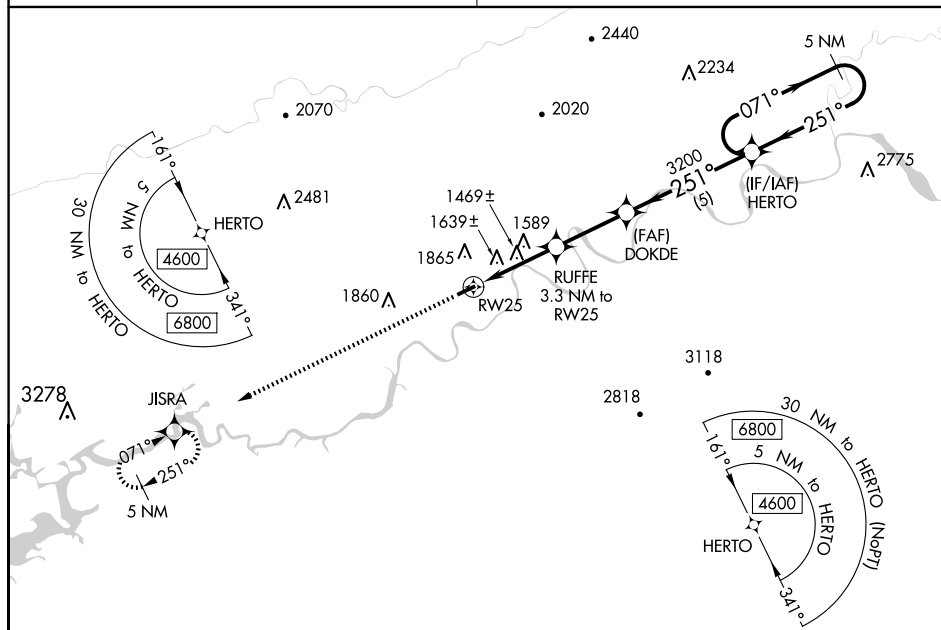
## RNAV (GPS) RWY 25

HAWKINS COUNTY (RVN)

**NA** DME/DME RNP-0.3 NA. Procedure NA at night. Obtain local altimeter setting on CTAF; when not received, use Tri-Cities altimeter setting and increase all MDA 120 feet, increase LP Cat C visibility  $\frac{3}{8}$  SM, LNAV Cat B visibility  $\frac{1}{4}$  SM, Cat C visibility  $\frac{3}{8}$  SM, and increase Circling Cat B visibility  $\frac{1}{4}$  SM. Rwy 7, 25 helicopter visibility reduction below 1 SM NA.

**MISSED APPROACH:**  
Climb to 4300 direct  
JISRA and hold.

TRI CITY APP CON ★  
128.05 317.5

UNICOM  
122.8 (CTAF) **L**

ELEV 1255		TDZE 1254
-----------	--	-----------

