

WAAS CH <b>82329</b> <b>W04A</b>	APP CRS <b>045°</b>	Rwy Idg TDZE Apt Elev	<b>5010</b> <b>578</b> <b>578</b>
--	------------------------	-----------------------------	---

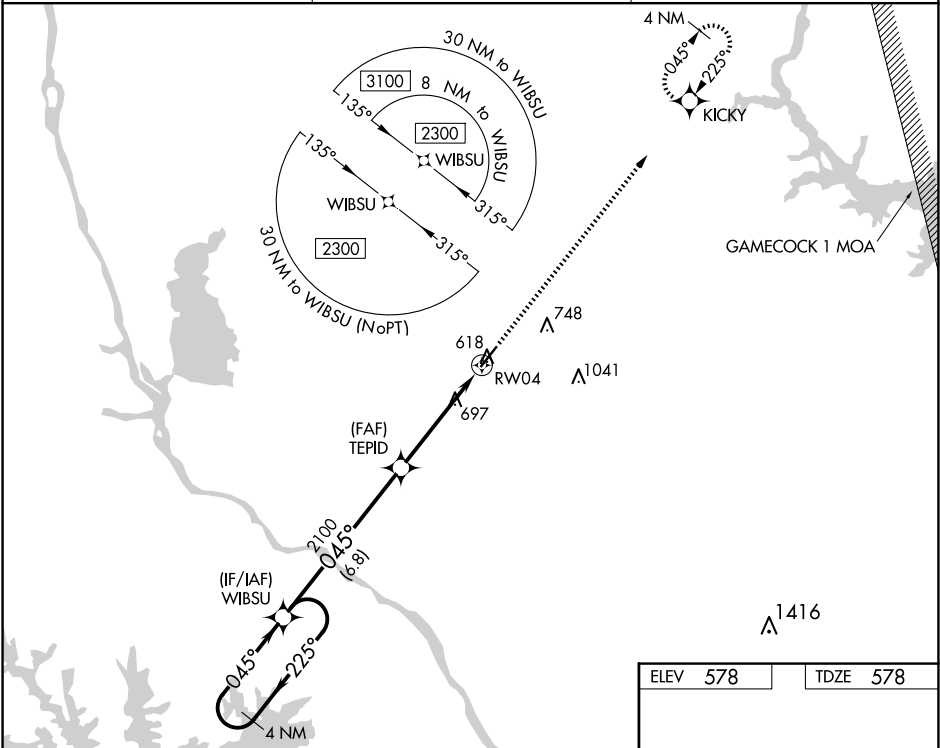
RNAV (GPS) RWY 4

FAIRFIELD COUNTY (FDW)

For uncompensated Baro-VNAV systems, LNAV/VNAV NA below -16°C (4°F) or above 54°C (130°F). DME/DME RNP-0.3 NA.

MISSED APPROACH: Climb to 2300 direct KICKY and hold.

AWOS-3 <b>119.075</b>	COLUMBIA APP CON <b>133.4 285.6</b>	UNICOM <b>123.05 (CTAF) 0</b>
--------------------------	--	----------------------------------



4 NM Holding Pattern		VGSI and RNAV glidepath not coincident (VGSI Angle 3.00/TCH 32).		2300 KICKY
2300		TEPID		2100
GP 3.00° TCH 40		2100		*1.1 NM to RW04
		6.8 NM		3.6 NM
				1.1
CATEGORY	A	B	C	D
LPV DA	828-7/8		250 (300-7/8)	
LNAV/VNAV DA	828-7/8		250 (300-7/8)	
LNAV MDA	960-1	382 (400-1)	960-1 1/8	382 (400-1 1/8)
CIRCLING	980-1 402 (500-1)	1040-1 462 (500-1)	1080-1 1/2 502 (600-1 1/2)	1360-2 1/2 782 (800-2 1/2)

