

WAAS CH <b>82733</b> <b>W33A</b>	APP CRS <b>335°</b>	Rwy Idg TDZE Apt Elev	<b>3304</b> <b>766</b> <b>769</b>
--	------------------------	-----------------------------	---

## RNAV (GPS) RWY 33

MAQUOKETA MUNI (OQW)

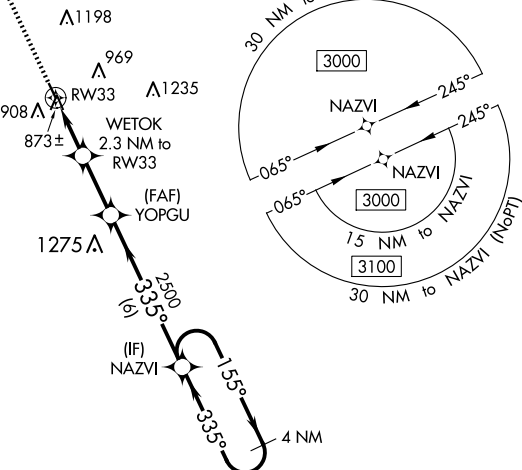
**NA** Circling to Rwy 15 NA at night. Baro-VNAV NA when using Dubuque altimeter setting. For uncompensated Baro-VNAV systems, LNAV/VNAV NA below -1.6°C (4°F) or above 54°C (130°F). DME/DME RNP-0.3 NA. Helicopter visibility reduction below 1 SM NA. Obtain local altimeter on CTAF; when not received, use Dubuque altimeter setting and increase all DA 92 feet and all MDA 100 feet. Increase LPV all Cats visibility to 1½ mile and LNAV/VNAV all Cats visibility to 1½ mile.

**MISSED APPROACH:** Climb to 3000 direct UPGEF and hold.

CHICAGO CENTER  
133.95 281.4

UNICOM  
122.725 (CTAF) 

MISSED APCH FIX



ELEV 769

TDZE 766

