

WAAS CH 69633 W15A	APP CRS 155°	Rwy Idg TDZE 769 Apt Elev 769	3304
--	------------------------	---	-------------

RNAV (GPS) RWY 15

MAQUOKETA MUNI (OQW)

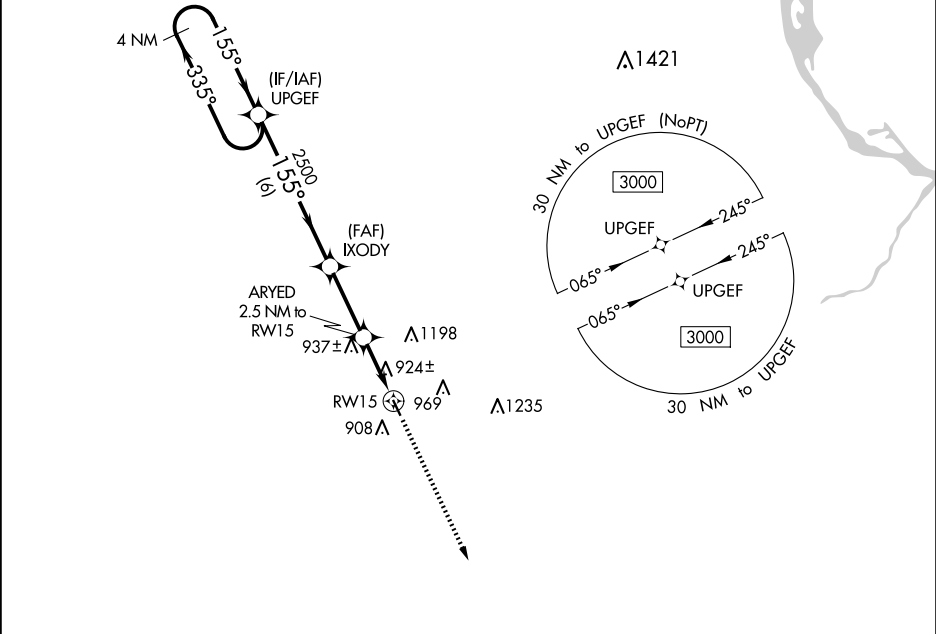
⚠

NA

DME/DME RNP-0.3 NA. Helicopter visibility reduction below 1 SM NA.
Night landing: Rwy 15 NA. Obtain local altimeter on CTAF; when not received, use Dubuque altimeter setting and increase all MDA 100 feet.

MISSED APPROACH: Climb to 3000 direct NAZVI and hold.

CHICAGO CENTER 133.95 281.4	UNICOM 122.725 (CTAF) 0
---------------------------------------	-----------------------------------



Visual Segment - Obstacles.

3000

NAZVI

4 NM Holding Pattern

UPGEF

IXODY

ARYED 2.5 NM to RW15

RW15

3000

335°

155°

1.55°

2500

1600

6 NM

2.8 NM

2.5 NM

CATEGORY	A	B	C	D
LP MDA	1180-1	411 (500-1)	NA	
LNAV MDA	1200-1	431 (500-1)	NA	
CIRCLING	1240-1 471 (500-1)	1400-1 631 (700-1)	NA	

ELEV 769

TDZE 769

155°

3304 X 60

0-98 UP

33

REIL Rwys 15 and 33 0

MIRL Rwy 15-33 0